

# Tools



Innovative TOOLS INC.

## Heavy Duty Pliers-Telecom

### Features/Benefits

- The most efficient pliers for telecom use - cut, strip and crimp with one tool.
- Long nose pliers, one skinning hole to strip 22 awg wire and feature a cross-jaw grip.
- Diagonal cutting pliers, two skinning holes for stripping 16 and 22 AWG wire.
- Quality construction, drop-forged chrome vanadium steel with hot-riveted joint.
- Both models have induction-hardened cutting edges and crimper features between handles.
- Velcro-close ripstop nylon holster included with each tool.

NEW

PART NO.
ELB101 Long Nose
ELB201 Diagonal Cutting



Innovative TOOLS INC.

## Ratcheting Pipe Wrench

### Features/Benefits

- Oversized jaws automatically set-to-fit for one-handed operation.
- Ratcheting jaw doesn't require resetting between turns.
- Power jaw clamps tighter as you increase torque force.
- 360° Swivel head allows full leverage in tight spots.
- Heavy-gauge chrome vanadium steel has excellent durability.

NEW

PART NO.
RC3110 10" Wrench Opens to 4.5"
RC3114 14" Wrench opens to 2.5"



Innovative TOOLS INC.

## Precision Adjustable Wrench

### Features/Benefits

- Oversized jaw opens 18% wider than standard wrenches
- Dual calibrated jaw.
- Superior engineering.
- Oversized grip has superior balance to reduce hand fatigue.
- Constructed of heavy-gauge, industrial-quality steel insuring durability.

NEW

PART NO.
RC2104 4" spans 1 1/16"
RC2106 6" spans 1 5/16"
RC2108 8" spans 1 1/8"
RC2110 10" spans 1 5/16"
RC2112 12" spans 1 9/16"



Innovative TOOLS INC.

## Box Joint Pump Pliers

### Benefits/Features

- Heavy-duty box joint construction can't torque out, won't loosen with use.
- Self-gripping jaw pattern provides tight, secure grip, even on slippery pipes.
- Cushioned, non-slip grip.
- Industrial quality chrome vanadium steel with induction-hardened teeth.

NEW

PART NO.
ELB345 10"
ELB346 12"



Innovative TOOLS INC.

## 8 in 1 Multi-Wrench

### Features/Benefits

- Chrome vanadium hardened steel with a solid shaft, chrome plated and rust resistant.
- Heavy-weight tool stands up to heavy use.
- Replaces 8 SAE wrenches: 5/16", 3/8", 9/16", 5/8", 7/16", 1/2", 11/16", 3/4".

NEW

PART NO.
SAB688 8 in 1 Multi-Wrench



Innovative TOOLS INC.

## Dual Snap Ring Pliers

### Features/Benefits

- Lighten your toolbox.
- All-in-one tool removes both internal and external snap rings.
- Spring-loaded over sized handle, cushioned for comfortable use.

NEW

PART NO.
ELB340 Snap Ring Pliers



Innovative TOOLS INC.

## Electronic Digital Caliper

### Features/Benefits

- 6" caliper, zero setting at any position.
- Conversion switch, instant conversion between millimeters and inches at any setting.
- High contrast, easy-to-read LCD digital display .
- Durable hardened stainless steel shaft.
- Uses one battery, type SR44 (included).
- One-year warranty.

NEW

PART NO.
ELB726 Digital Caliper

### Technical Specifications

Measuring range:	0 - 150 mm/0 - 6"	Measuring system:	Linear capacitive measuring system
Resolution:	0+01 mm/0.0005"	Display:	LCD display
Accuracy:	0+02 mm/0.001"(< 100 mm) 0+03 mm/0.001"(> 100 mm)	Battery power:	One silver oxide 1+55v, type SR44
Repeatability:	0+01 mm/0.0005"	Max. measuring speed:	1+5 m/second, 60"/second

# Tools



## Electrician's Fish Stick Set

### Features/Benefits

- Economical, efficient, and snarl-free way to pull or push wire.
- Safe, non-conductive flexible PVC plastic, bends easily around obstacles.
- Five-piece set contains 5 connectable rods, 24" long and 3/8" diameter.
- Includes 2 bull tip slotted heads for attaching wire.
- Rods feature rust-resistant internal connectors.
- Set includes nylon carrying case.



PART NO.	
ELB713 Fish Stick Set	



## Pry-Angle™ Adjustable Prybar

### Features/Benefits

- Clawhead is indexed to lock into 5 positions: 180° (straight), 155°, 130°, 105°, 80°.
- Super tough locking mechanism with thumb lever allows one-handed angle changes.



PART NO.	
RC1216	16" Prybar
RC1220	20" Prybar



## Quick Release Tubing Cutter

### Features/Benefits

- Auto ratchet closure sets to pipe automatically.
- Quick release, spring-loaded retractor releases pipe instantly.
- Lightweight aluminum body with built-in reamer feature.
- ELB401 1.25" Tubing Cutter cuts 1/8" to 1-1/4" o.d. copper tubing.
- ELB402 2" Tubing Cutter cuts 1/4" to 2" o.d. copper tubing.
- Replacement cutting wheels; replacements sold separately.



PART NO.	
ELB401	Cutter
ELB402	Cutter
ELB401/R	Replacement Wheel
ELB402/R	Replacement Wheel



## Mini Tubing Cutter

### Features/Benefits

- Tough, lightweight aluminum cutter for copper pipe 1/8" – 7/8" o.d.
- One Spare wheel included.



PART NO.	
ELB400	



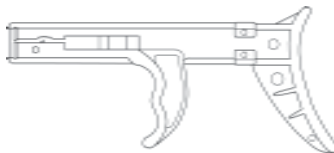
## Automatic Cable Tie Gun

### Features/Benefits

- Fast, efficient cable tie gun.
- Tension adjustment wheel, choose preferred tension, automatically cuts when correct tension is reached.
- Fastens and cuts plastic cable ties in one motion.
- For use with ties up to 0.25".



PART NO.	
ELB720	



## Mini Cable Tie Gun

### Features/Benefits

- The right cable tie gun for small jobs.
- Compact size accommodates plastic cable ties up to 0.25" in width.
- Twist cable gun to cut and trim off excess cable tie length.



PART NO.	
ELB721	



## Fish Tape

### Features/Benefits

- Trigger for constant tension and finger grips around the reel keep the tape under control and retracting tightly.
- Tape reel cleans the tape as it retracts.
- Refills sold separately.



REFILL		
PART NO.		PART NO.
ELB710	50' Length	ELB710/R
ELB711	100' Length	ELB711/R



## Cable Splicing Knife

### Features/Benefits

- Coping-type blade is machined from fine cutlery steel.
- Non-slip, textured rubberized handle.
- Heavy-duty leather carrying sheath included.



PART NO.	
ELB701-L	



## Painless Safety Cutter

### Features/Benefits

- Prevent injuries from sharp cable ties—the safety cutter has a square cutting profile that blunt-cuts wire ties and other plastics.
- Professional quality, spring-loaded handles with precision ground, hardened steel jaws.
- To leave a blunt edge on wire tie bundles, place flush edge of cutter head toward the bundle, then cut.



PART NO.	
ELB400	

# Tools & Accessories



## CTP1- Capillary Tube Cutter

5" stripper and cutter. Fast, efficient and all purpose.



## TC2 - Heavy Duty Tube Cutter

- For clean cuts in hard or soft copper aluminum, brass, thin wall steel and stainless steel.
- Rollers have flared cut off groove
- Complete with foldaway reamer blade and spare cutting wheel.

- Cuts tubes from 1/8" thru 1 1/8" O.D.
- Replacement cutting wheel p/n TC2W



## UFC1 - Fin Comb

Cleans and straightens fins for better operating efficiency.



## FPT10, FPT13 & FPT15 Fin Jack

Straightens and separates bent fins quickly and easily. One tool can be used for up to 3 sizes of fins.



## FCR6 - Handy Ring Fin Comb Set

Six of the most popular Fin Combs covering twelve different size fins on a convenient ring. Includes FC0810, FC0915, FC1113, FC1214, FC1617, and FC1820.



## Fin Combs

Straighten and clean evaporator and condensor fins.

PART NO.	DESCRIPTION
FPT10	9 & 10 Fins per inch
FPT13	11, 12 & 13 Fins per inch
FPT15	14, 15 & 16 Fins per inch

PART NO.	FINS PER		COLOR	PART NO.	FINS PER	
	INCH				INCH	
FC0810	8 and 10		Orange	FC1617	16 and 17	Lime
FC0915	9 and 15		Yellow	FC1820	18 and 20	Red
FC1113	11 and 13		Blue	FC2224	22 and 24	Purple
FC1214	12 and 14		Green			



## SF4311- "FasTap" Tube Piercing Pliers

- Fast refrigerant recovery: Just clamp and recover
- Tubing sizes 1/4" to 7/8" OD
- Replaceable self-sharpening tip

- Simple to use
- Light weight



## SF4314 - Tube Piercing Pliers Replacement Tip



## SF3970 - Internal Temperature Reading Tool

Take Internal Temperatures of Refrigerant Lines digitally.

- Accurately adjust superheat
- Simple instructions
- Inserts through access fitting (supplied)

Includes: Core Removal Tool and Digital Thermometer  
Replaces SF3940 AND SF3960



## DHS55 - Digital Handheld Scale

This compact handheld scale provides quick measurements for your refrigeration applications.

### Features/Benefits

- 55 lbs max scale
- 2% accuracy
- One button operation
- Auto shut off
- Lbs/Kgs switchable
- Max weight memory
- 9 V battery included



## HVT2 - Safe-T-Tester Screwdriver

- 110-220 VAC
- Light in handle indicates power



## P85 "Tester Plus"

- 12-440 VAC
- Check Continuity, Voltage and Polarity



## P89 - Voltage Detector

- 12-440 VAC

- Non-contact Voltage Detection



# Tools & Accessories



## ELD - Illuminated Inspection Mirror/Flashlight

- For previously inaccessible areas
- Push button and continuous "ON" twist switch.



## Telescoping Tools

Match Clip, Magnet, and Inspection Mirrors

### Features/Benefits

- Double ball joint head adjustment
- Extendable/retractable design
- Magnified glass mirror available with IM4
- Carry pouch included
- Glass Mirrors

PART NO.	DESCRIPTION	EXTENDED LENGTH
CT1	Heavy Duty Match Clip, Pocket Clip	26"
IM1	1.25" Round Glass Mirror, Pocket Clip	27"
IM2	1" x 2" Oval Glass Mirror, Pocket Clip	28"
IM3	2.25" Round Glass Mirror, Vinyl Grip Handle	14.5"
IM4	2.25" Round Magnifying Glass Mirror, Vinyl Grip Handle	14.5"
IM5	2.25" x 3.25" Rectangular Glass Mirror, Vinyl Grip Handle	15.5"
IMK3	Combination Tool, Pocket Clip Includes: Match Clip, Magnet, 2" Round Mirror & PVC Pouch	27"



## 417 - Drain Blaster

Hooks up to air tank or refrigeration hose to use as a high pressure blow-out for drains.



## FWB1 - Fin Wisk Brush

### Features

- Long lasting, sturdy Bristle Design



## Air Conditioning & Refrigeration Wrenches

PART NO.	DESCRIPTION
RW516	1/4" - 3/16" Sq. x 3/8" - 5/16" Hex
RW916	1/4" - 3/16" Sq. x 1/2" - 9/16" Hex
RWA10	Hex adapter for refrigeration wrenches



## S7L300 - Tension Tool

Tension tool for 120-175 lb. Duct Ties



## MT100 - Magnetic Parts Tray



## Blower Wheel Pullers

A fast and easy method to remove blower wheel from shaft without damage to the blower, blower motor or shaft.

PART NO.	DESCRIPTION
SF3500	Drive bolt shank and 1 1/4" hub
SF3510	Drive bolt shank and 1 3/8" hub
SF3515	1 3/8" hub only
SF3525	1 1/2" hub only
SF3535	1 5/8" hub only
SF3570	Blower wheel puller kit



## FBP100 - Fan Blade Puller

### Features

- Sturdy, heavy duty steel
- 5/8" steel center shaft
- 4 pull fingers
- Alignment tool included
- Has flats for wrench
- Fine thread version provides additional torque & pulling power



# Tools & Accessories



## TC103 Test Cord

- 6', heavy duty, 16 gauge wire
- Male plug to medium duty spring clips
- 2 wire, black/red



## TC104

- 24", heavy duty, 16 gauge wire
- Female plug to medium size spring clips
- 3 wire, black/red/green



## TA3001

- 15' long, 1" nylon webbing
- Adjusts from 1' to 15'
- Ratchet handle w/ quick release

- Vinyl coated "S" hooks at each end
- 3000 lb. capacity



## THS1441

- 12' long, 1" nylon webbing
- Adjusts from 1' to 12'
- Steel cam lever buckle for quick release

- Vinyl coated "S" hooks at each end
- 3000 lb. strap capacity/ 1500 lb. buckle capacity



## THS60

- 5' long, 3/4" polypropylene web strap
- Reinforced grommet
- Spring loaded buckle at one end



## SR6N1- 6 in 1 Ratchet Screwdriver

**Sold in 12 pack display!**

- Ratchet Action
- 3-Settings:
  - Forward
  - Manual
  - Reverse

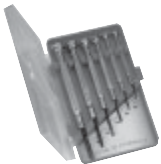
- Bit Sizes
  - Slotted: 3/16" (5mm) and 1/4" (6mm)
  - Phillips: #1 and #2
  - Nut Driver: 1/4" and 5/16"



## SAR21- 21 in 1 Angling Ratchet Screwdriver

**Sold in 6 pack display!**

- 21 Bit Sizes
- Multi-Position Angle
- Bit Storage



## JS1 Jeweler's Screwdriver Set

Set of six assorted small-sized, swivel type screwdrivers.



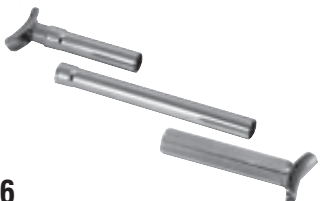
## UW1- Universal Wrench

Ranges in sizes from 1/4", 5/16", 11/32", and 3/8".



## HK7 - Hex Key Wrench Set

Consists of seven 12" long hex wrenches: 5/64", 3/32", 1/8", 5/32", 3/16", 7/32" and 1/4".



## BJ10 - Belt-Jack Instant Belt Tightener

Designed to set belt tension and to help align pulleys on all belt driven units including blower motors, compressors, transmissions, and automotive components.

- Opens from 4 1/2" to 15" with extender
- Heavy duty 3/8-16 thread

## BJ10PLUS - Belt-Jack Instant Belt Tightener

Same as BJ10 Plus an extra 6" extension

# Terminals & Connectors

**SUPCO Terminals, Cable Clamps, Grommets, Heat Shrink Tubing, Cable and Duct Ties are available in three convenient packages:**

- The service pack is handy and low priced, ideal for small jobs.
- The BX (Box) which includes 50 or 100 pieces.
- The C Pack (Bag) which include 100 pieces.



SHS  
Series

## SHS Series Heat Shrink Tubing, Polyolefin 50% Shrink

PART NO.	DESCRIPTION	PKG QTY
SHS03	Heat Shrink Tubing 3/16" ID x 4"	8
SHS04	Heat Shrink Tubing 1/4" ID x 4"	7
SHS06	Heat Shrink Tubing 3/8" ID x 4"	6
SHS08	Heat Shrink Tubing 1/2" ID x 4"	5
SHS012	Heat Shrink Tubing 3/4" ID x 4"	4
SHS16	Heat Shrink Tubing 1" ID x 4"	3
SHSA1	Assorted 3/16, 1/4, 3/8" x 4"	7
SHSA2	Assorted 1/2, 3/4, 1" x 4"	4



SGV  
Series

## SGV Series Grommets, Vinyl (by panel hole size)

PART NO.	DESCRIPTION	PKG QTY
SGV04	Grommets 1/4" (.250)	18
SGV05	Grommets 5/16" (.3125)	15
SGV06	Grommets 3/8" (.375)	13
SGV07	Grommets 7/16" (.437)	12
SGV08	Grommets 1/2" (.500)	12
SGV10	Grommets 5/8" (.625)	7
SGV14	Grommets 7/8"	4
SGV16	Grommets 1"	4
SGVA1	Assorted Grommets - Small	15
SGVA2	Assorted Grommets - Large	5



SWC  
Series

## SWC Series Nylon Cable Clamps

PART NO.	DESCRIPTION	PKG QTY
SWC02	Nylon Cable Clamp 1/8" (.125)	40
SWC03	Nylon Cable Clamp 3/16" (.187)	40
SWC04	Nylon Cable Clamp 1/4" (.250)	35
SWC05	Nylon Cable Clamp 5/16" (.3125)	35
SWC06	Nylon Cable Clamp 3/8" (.375)	30
SWC08	Nylon Cable Clamp 1/2" (.500)	25
SWC110	Nylon Cable Clamp 5/8"	20
SWC112	Nylon Cable Clamp 3/4"	15
SWC116	Nylon Cable Clamp 1"	14
SWCA1	Cable Clamps, Assorted, 1/8" to 1"	26

# Terminals & Connectors

## Electrical Terminals



PART NO.	SIZE / DESCRIPTION	PKG QTY
<b>Quick Disconnects - Insulated</b>		
T1001	12-10 .250 (1/4") female tab	15
T1001C	12-10 .250 (1/4") female tab	100
T1002	16-14 .250 (1/4") female tab	20
T1002C	16-14 .250 (1/4") female tab	100
T2002	16-14 .187 (3/16") female tab	20
T2002C	16-14 .187 (3/16") female tab	100
T2004	22-18 .250 (1/4") female tab	20
T2004C	22-18 .250 (1/4") female tab	100



PART NO.	SIZE / DESCRIPTION	PKG QTY
<b>Quick Disconnects - Insulated</b>		
T1005	16-14 .250 (1/4") female fully insulated	10
T1105C	16-14 .250 (1/4") female fully insulated	100
T1007	18-22 .250 (1/4") female fully insulated	10
T1007C	18-22 .250 (1/4") female fully insulated	100
T1009	12-10 .250 (1/4") female fully insulated	10
T1009C	12-10 .250 (1/4") female fully insulated	100



PART NO.	SIZE / DESCRIPTION	PKG QTY
<b>Quick Disconnects - Insulated</b>		
T1021	.250 (1/4") double male tab	10
T1021C	.250 (1/4") double male tab	100



PART NO.	SIZE / DESCRIPTION	PKG QTY
<b>Quick Disconnects - Insulated</b>		
T1023	.250 (1/4") triple male tab	10
T1023C	.250 (1/4") triple male tab	100



PART NO.	SIZE / DESCRIPTION	PKG QTY
<b>Quick Disconnects - Non Insulated</b>		
T1102	16-14 .250 (1/4") female tab	20
T1102C	16-14 .250 (1/4") female tab	100
T1105	16-14 .187 (3/16") female tab	20
T1105C	16-14 .187 (3/16") female tab	100
T1107	22-18 .110 (7/64") female tab	20
T1107C	22-18 .110 (7/64") female tab	100
T2001	22-18 .110 (1/4") female tab	20
T2001C	22-18 .110 (1/4") female tab	100
<b>Quick Disconnects - High Temp to 900°F</b>		
T1111	16-14 .250 (1/4") female tab	20
T1111C	16-14 .250 (1/4") female tab	100
T1112	12-10 .250 (1/4") female tab	15
T1112C	12-10 .250 (1/4") female tab	100



PART NO.	SIZE / DESCRIPTION	PKG QTY
<b>Quick Disconnects - Non Insulated</b>		
T1108	16-14 .157 (5/32") bullet male	20
T1108C	16-14 .157 (5/32") bullet male	100



PART NO.	SIZE / DESCRIPTION	PKG QTY
<b>Quick Disconnects - Insulated</b>		
T1003	16-14 .250 (1/4") male tab	20
T1003C	16-14 .250 (1/4") male tab	100
T1004	12-10 .250 (1/4") male tab	15
T1004C	12-10 .250 (1/4") male tab	100
T2003	16-14 .187 (3/16") male tab	20
T2003C	16-14 .187 (3/16") male tab	100



PART NO.	SIZE / DESCRIPTION	PKG QTY
<b>Quick Disconnects - Insulated</b>		
T1106	16-14 .250 (1/4) male fully insulated	10
T1106C	16-14 .250 (1/4) male fully insulated	100
T1008	18-22 .250 (1/4) male fully insulated	10
T1008C	18-22 .250 (1/4) male fully insulated	100
T1010	12-10 .250 (1/4) male fully insulated	10
T1010C	12-10 .250 (1/4) male fully insulated	100



PART NO.	SIZE / DESCRIPTION	PKG QTY
<b>Quick Disconnects - Insulated</b>		
T1022	.250 (1/4) double male tab	10
T1022C	.250 (1/4) double male tab	100



PART NO.	SIZE / DESCRIPTION	PKG QTY
<b>Quick Disconnects - Insulated</b>		
T1027	16-14 .250 (1/4") male/female p.b.	10
T1027C	16-14 .250 (1/4") male/female p.b.	100
T1028	22-18 .250 (1/4") male/female p.b.	10
T1028C	22-18 .250 (1/4") male/female p.b.	100
T1029	12-10 .250 (1/4") male/female p.b.	10
T1029C	12-10 .250 (1/4") male/female p.b.	100



PART NO.	SIZE / DESCRIPTION	PKG QTY
<b>Quick Disconnects - Non Insulated</b>		
T1103	16-14 .250 (1/4") male tab	20
T1103C	16-14 .250 (1/4") male tab	100



PART NO.	SIZE / DESCRIPTION	PKG QTY
<b>Quick Disconnects - Non Insulated</b>		
T1104	16-14 .250 (1/4") flag	20
T1104C	16-14 .250 (1/4") flag	100
T1106	16-14 .187 (3/16") flag	20
T1106C	16-14 .187 (3/16") flag	100
<b>Quick Disconnects - High Temp to 900 F</b>		
T1113	16-14 .250 (1/4") female x 90 degree flag	20
T1113C	16-14 .250 (1/4") female x 90 degree flag	100



PART NO.	SIZE / DESCRIPTION	PKG QTY
<b>Quick Disconnects - Non Insulated</b>		
T1110	16-14 .157 (5/32") bullet female	20
T1110C	16-14 .157 (5/32") bullet female	100

# Terminals & Connectors

## Electrical Terminals



PART NO.	SIZE / DESCRIPTION	PKG QTY
<b>Quick Disconnects - Non Insulated</b>		
T1109	16-14 .250 (1/4") female tab w/insulation crimp	20
T1109C	16-14 .250 (1/4") female tab w/insulation crimp	100
T1120	16-14 .312 (5/16") female tab w/insulation crimp	10
T1120C	16-14 .312 (5/16") female tab w/insulation crimp	100
<b>Quick Disconnects - High Temp to 900°F</b>		
T2101	16-14 .250 (1/4") female with crimp	20
T2101C	16-14 .250 (1/4") female with crimp	100



PART NO.	SIZE / DESCRIPTION	PKG QTY
<b>Quick Disconnects - Non Insulated</b>		
T1127	16-14 .250 (1/4") male/female p.b.	10
T1127C	16-14 .250 (1/4") male/female p.b.	100



PART NO.	SIZE / DESCRIPTION	PKG QTY
<b>Quick Disconnects - High Temp to 900°F</b>		
T1114	12-10 .250 (1/4") female x 90 degree flag	20
T1114C	12-10 .250 (1/4") female x 90 degree flag	100



PART NO.	SIZE / DESCRIPTION	PKG QTY
<b>Spade Flanged - Insulated</b>		
T1042	22-18 #8 stud 11/64 I.D.	20
T1042C	22-18 #8 stud 11/64 I.D.	100
T1043	16-14 #8 stud 11/64 I.D.	20
T1043C	16-14 #8 stud 11/64 I.D.	100
T1044	16-14 #10 stud 13/64 I.D.	20
T1044C	16-14 #10 stud 13/64 I.D.	100
T1046	12-10 #10 stud 13/64 I.D.	15
T1046C	12-10 #10 stud 13/64 I.D.	100



PART NO.	SIZE / DESCRIPTION	PKG QTY
<b>Spade - Insulated</b>		
T1047	22-18 #8 stud 11/64 I.D.	20
T1047C	22-18 #8 stud 11/64 I.D.	100
T1048	16-14 #10 stud 13/64 I.D.	20
T1048C	16-14 #10 stud 13/64 I.D.	100
T1049	12-10 #10 stud 13/64 I.D.	15
T1049C	12-10 #10 stud 13/64 I.D.	100
T1050	12-10 #8 stud 11/64 I.D.	15
T1050C	12-10 #8 stud 11/64 I.D.	100



PART NO.	SIZE / DESCRIPTION	PKG QTY
<b>Spade Flanged - Insulated</b>		
T1141	22-18 #8 stud 11/64 I.D.	20
T1141C	22-18 #8 stud 11/64 I.D.	100
T1142	22-18 #10 stud 13/64 I.D.	20
T1142C	22-18 #10 stud 13/64 I.D.	100
T1143	16-14 #8 stud 11/64 I.D.	20
T1143C	16-14 #8 stud 11/64 I.D.	100
T1144	16-14 #10 stud 13/64 I.D.	20
T1144C	16-14 #10 stud 13/64 I.D.	100



PART NO.	SIZE / DESCRIPTION	PKG QTY
<b>Rings - Insulated</b>		
T1030	22-18 #6 stud 9/64 I.D.	10
T1030C	22-18 #6 stud 9/64 I.D.	100
T1031	22-18 #8 stud 11/64 I.D.	20
T1031C	22-18 #8 stud 11/64 I.D.	100
T1032	22-18 #10 stud 13/64 I.D.	20
T1032C	22-18 #10 stud 13/64 I.D.	100
T1033	16-14 #8 stud 11/64 I.D.	20
T1033C	16-14 #8 stud 11/64 I.D.	100
T1034	16-14 #10 stud 13/64 I.D.	20
T1034C	16-14 #10 stud 13/64 I.D.	100
T1035	16-14 1/4 stud 17/64 I.D.	15
T1035C	16-14 1/4 stud 17/64 I.D.	100
T1036	12-10 #8 stud 11/64 I.D.	15
T1036C	12-10 #8 stud 11/64 I.D.	100
T1037	12-10 #10 stud 13/64 I.D.	15
T1037C	12-10 #10 stud 13/64 I.D.	100
T1038	12-10 1/4 stud 17/64 I.D.	15
T1038C	12-10 1/4 stud 17/64 I.D.	100
T1039	16-14 3/8 stud 25/64 I.D.	15
T1039C	16-14 3/8 stud 25/64 I.D.	100
T1040	12-10 3/8 stud 25/64 I.D.	15
T1040C	12-10 3/8 stud 25/64 I.D.	100
T2033	16-14 #6 stud 9/64 I.D.	20
T2033C	16-14 #6 stud 9/64 I.D.	100
T2065	#8 1/4 stud 17/64 I.D.	15
T2065C	#8 1/4 stud 17/64 I.D.	100
T2066	#6 1/4 stud 17/64 I.D.	15
T2066C	#6 1/4 stud 17/64 I.D.	100



PART NO.	SIZE / DESCRIPTION	PKG QTY
<b>Rings - Non Insulated</b>		
T1131	22-18 #8 stud 11/64 I.D.	20
T1131C	22-18 #8 stud 11/64 I.D.	100
T1133	16-14 #8 stud 11/64 I.D.	20
T1133C	16-14 #8 stud 11/64 I.D.	100
T1134	16-14 #10 stud 11/64 I.D.	20
T1134C	16-14 #10 stud 11/64 I.D.	100
T1135	16-14 1/4 stud 17/64 I.D.	20
T1135C	16-14 1/4 stud 17/64 I.D.	100
T1136	12-10 #8 stud 11/64 I.D.	20
T1136C	12-10 #8 stud 11/64 I.D.	100
T1137	12-10 #10 stud 13/64 I.D.	20
T1137C	12-10 #10 stud 13/64 I.D.	100
T1138	12-10 1/4 stud 17/64 I.D.	15
T1138C	12-10 1/4 stud 17/64 I.D.	100
<b>Rings - High Temp to 900°F</b>		
T1115	16-14 #10 stud 13/64 I.D.	20
T1115C	16-14 #10 stud 13/64 I.D.	100
T1116	16-14 1/4 stud 17/64 I.D.	20
T1116C	16-14 1/4 stud 17/64 I.D.	100
T1117	12-10 #10 stud 13/64 I.D.	20
T1117C	12-10 #10 stud 13/64 I.D.	100
T1118	12-10 1/4 stud 17/64 I.D.	15
T1118C	12-10 1/4 stud 17/64 I.D.	100

# Terminals & Connectors

## Electrical Terminals



PART NO.	SIZE / DESCRIPTION	PKG QTY
<b>Spade - Non Insulated</b>		
T1145	22-18 #10 stud 13/64 I.D.	10
T1145C	22-18 #10 stud 13/64 I.D.	100
T1146	16-14 #10 stud 13/64 I.D.	10
T1146C	16-14 #10 stud 13/64 I.D.	100
T1147	10-12 #10 stud 13/64 I.D.	10
T1147C	10-12 #10 stud 13/64 I.D.	100
T1147-50	WIRE CNCTR, SM, GRAY	50



PART NO.	SIZE / DESCRIPTION	PKG QTY
<b>Butt Connectors</b>		
T1119	22-18 non insulated	20
T1119C	22-18 non insulated	100
T2067	#8 non insulated	20
T2067C	#8 non insulated	100
T2068	#6 non insulated	20
T2068C	#6 non insulated	100
T2111	16-14 non insulated	20
T2111C	16-14 non insulated	100
T2112	12-10 non insulated	15
T2112C	12-10 non insulated	100



PART NO.	SIZE / DESCRIPTION	PKG QTY
<b>Line Tap Connector</b>		
T1061	22-18 line tap connector	10
T1061C	22-18 line tap connector	100
T1062	16-14 line tap connector	10
T1062C	16-14 line tap connector	100
T1064	12-10 line tap connector	5
T1064C	12-10 line tap connector	100



PART NO.	SIZE / DESCRIPTION	PKG QTY
<b>Connectors and Adapters</b>		
T1122	.250 (1/4") 2 male x 1 female	10
T1122C	.250 (1/4") 2 male x 1 female	100



PART NO.	SIZE / DESCRIPTION	PKG QTY
<b>Wire Connectors</b>		
T1150	small blue wire nut with spring insert	20
T1150C	small blue wire nut with spring insert	100
T1151	medium orange wire nut with spring insert	15
T1151C	medium orange wire nut with spring insert	100
T1152	large yellow wire nut with spring insert	15
T1152C	large yellow wire nut with spring insert	100
T1153	extra large red wire nut with spring insert	10
T1153C	extra large red wire nut with spring insert	100
T1161	small yellow wire nut without insert	20
T1161C	small yellow wire nut without insert	100
T1162	medium white wire nut without insert	20
T1162C	medium white wire nut without insert	100
T1163	large white wire nut without insert	20
T1163C	large white wire nut without insert	100



PART NO.	SIZE / DESCRIPTION	PKG QTY
<b>Butt Connectors</b>		
T1051	22-18 insulated - red	20
T1051C	22-18 insulated - red	100
T1052	16-14 insulated - blue	20
T1052C	16-14 insulated - blue	100
T1053	12-10 insulated - yellow	15
T1053C	12-10 insulated - yellow	100



PART NO.	SIZE / DESCRIPTION	PKG QTY
<b>Closed End Connectors</b>		
T1056	22-18 insulated crimp type	20
T1056C	22-18 insulated crimp type	100
T1057	16-14 insulated crimp type	15
T1057C	16-14 insulated crimp type	100
T1058	12-10 insulated crimp type	15
T1058C	12-10 insulated crimp type	100
T1059	#8 insulated crimp type	15
T1059C	#8 insulated crimp type	100



PART NO.	SIZE / DESCRIPTION	PKG QTY
<b>Line Tap with Disconnect</b>		
T1065	18-14 line taps only	10
T1065C	18-14 line taps only	100



PART NO.	SIZE / DESCRIPTION	PKG QTY
<b>Connectors and Adapters</b>		
T1121	.250 (1/4") 2 male x 1 female	10
T1121C	.250 (1/4") 2 male x 1 female	100



PART NO.	SIZE / DESCRIPTION	PKG QTY
<b>Connectors and Adapters</b>		
T1123	.250 (1/4") x #10 stud	10
T1123C	.250 (1/4") x #10 stud	100



PART NO.	SIZE / DESCRIPTION	PKG QTY
<b>Connectors and Adapters</b>		
T1125	.250 (1/4") 2 male x 1 female	10
T1125C	.250 (1/4") 2 male x 1 female	100



PART NO.	SIZE / DESCRIPTION	PKG QTY
<b>Connectors and Adapters</b>		
T1124	.250 (1/4") female x #6 screw	10
T1124C	.250 (1/4") female x #6 screw	100



PART NO.	SIZE / DESCRIPTION	PKG QTY
<b>Connectors and Adapters</b>		
T1129	12-8 .250 (1/4") compressor terminal	10
T1129C	12-8 .250 (1/4") compressor terminal	100
T1130	16-14 .250 (1/4") compressor terminal	10
T1130C	16-14 .250 (1/4") compressor terminal	100

# Terminals & Connectors

## Electrical Terminals



PART NO.	SIZE / DESCRIPTION	PKG QTY
<b>High Heat Porcelain Wire Connectors (Up To 1800 F)</b>		
T1164	small #1 high heat porcelain wire nut 18- 14wire	15
T1164C	small #1 high heat porcelain wire nut 18 - 14 wire	100
T1165	small #3 high heat porcelain wire nut 12- 10 wire	15
T1165C	small #3 high heat porcelain wire nut 12 - 10 wire	100
T2070	small #1 high heat porcelain wire nut 8 - 10 wire	10
T2070C	small #1 high heat porcelain wire nut 8 - 10 wire	100



PART NO.	SIZE / DESCRIPTION	PKG QTY
<b>Scotchlok Electrical Spring Connectors</b>		
T1166	small yellow	15
T1166C	small yellow	100
T1167	medium red	10
T1167C	medium red	100
T1168	large gray	5
T1168L	large gray	50
T1169	extra large blue	5
T1169L	extra large blue	50



PART NO.	SIZE / DESCRIPTION	PKG QTY
<b>Banana Plug</b>		
T1179	includes black and red insulators	1 pair



PART NO.	SIZE / DESCRIPTION	PKG QTY
<b>Heavy Duty Alligator Clips</b>		
T1186	small includes black and red insulators	1 pair
T1187	medium includes black and red insulators	1 pair
T1188	large includes black and red insulators	1 pair



PART NO.	SIZE / DESCRIPTION	PKG QTY
<b>Alligator Clips</b>		
T1191	small standard clips	10
T1192	medium standard clips	5
T1193	medium for use with test leads	5



PART NO.	SIZE / DESCRIPTION	PKG QTY
<b>Alligator Clips</b>		
T1196	small includes black and red insulators	3 pair
T1197	medium includes black and red insulators	1 pair

# Chemicals



## M444 Aerosol Lubricant & Metal Protectant

Specially created and perfected for Professional technicians and mechanics everywhere... and there is nothing like it in the world!

- Turns old tools into new ones
- Can be used on cars, trucks, bicycles, fishing gear, marine gear, electrical and electronic gear, machinery, appliances etc.

### Applications

- Lubricates
- Prevents Rust and Corrosion
- Restores Moisture
- Restores Tools and Equipment



12 per case

## M098 Zoom Spout® Oiler

A paraffin base, non-gumming, high quality lubricating oil

- All-Purpose Lubricating Oil
- Flexible spout extends and retracts, adjusts to any "in-between" length
- Withstands high temperatures without breaking down
- Viscosity 92-99 @ 140°F

### Applications

- All types of motors, blowers, oil burner bearings, linkages, appliance pumps, etc...
- Normal and High speed shaft bearings



M098



M044

## Rust Buster® Solvent

*Dissolves Rust*

- Telescoping Pullout Spout
- Loosens rust in seconds
- No lingering odor
- Counter Display Case

PART NO.	BOTTLE SIZE	PACKAGING
M098	4 oz	12/Case
M044	4 oz	12/Case

## SUPCO88 Oil Additive

Introduced in 1954 and valued worldwide, this super lubricant is a "must use" in repair and preventative maintenance programs.

- Compatible with all refrigeration oils
- Dissolves sludge buildup on bearing and valve surfaces
- Prevents binding of high speed compressors
- Prevents excess wear in motors and compressors

PART NO.	BOTTLE SIZE	PACKAGING
S8	8 OZ.	24/Ctn



### Application Notes:

To Prevent Excess Wear on Expansion Valves and Capillaries Mix one part SUPCO88 to 9 parts refrigeration oil.

- Prevents excess wear on expansion valve needles and seats.
- Penetrates the pores of ALL moving metal parts of the expansion valve for constant lubrication.

Extend the Life of ALL Motors (i.e. for Blowers Air Conditioners)

- A few drops will help free a "frozen" or sticking motor shaft
- Mix 9 to one for regular bearing maintenance.
- Decreases "bearing to shaft" friction and sludge accumulation when mixed 9 to one.

More Efficiency for High Speed Compressors

- Increases the lubricating capability of mineral oils in high speed compressors.
- Used in new units to reduce current draw by reducing friction and preventing overloading.
- SUPCO88 can be left in the system permanently.

## S0100/ST200

### Slimeout®

## Condensate Pan Conditioning Tablets

- Slimeout® tablets prevent plugging of the air conditioning condensate drip pans and drain lines
- Slimeout® does not release any chlorine or other noxious fumes
- Slimeout® eliminates odors
- Slimeout® easily solves problems



	PART NO.	PART NO.
	<b>S0100</b>	<b>ST200</b>
Description	Slime Out	Slime Tab
Tablets Jar	100	200
Tablet Size	35 grams	20 grams
Initial Application	2 tabs/3 tons	3 tabs/3 tons
Maintenance	2 per month	3 per month



\* MSDS Sheets are available for all chemicals, visit [www.supco.com](http://www.supco.com)

# Chemicals



## Leak Lock and Leak Lock GOLD with Teflon

A resin based soft setting brushable paste pipe joint compound resistant to all refrigerants, oils, water and most chemicals, liquids and gases.

- Use with pressures to 10,000 PSI to full vacuums.
- Temperature range -200°F to 400°F, (-93°C) to (204°C).
- It never hardens and it never becomes brittle.
- Ideal for joining all metals, plastics and other materials.
- Will stick to all clean surfaces.
- Will stick to all clean surfaces.
- Prevent vibration from loosening nuts, bolts, plugs and fittings.
- Non Toxic

PART NO.	SIZE	PKG
HS10001	1 1/3 oz Tube	12/Case
HS10004	4 oz Brush Top Plastic Jar	12/Case
HS10016	16 oz Brush Top Plastic Jar	12/Case
HS10128	1 Gallon Can	1

PART NO.	SIZE	PKG
HS11001	1 1/3 oz TUBE	12/Case
HS11004	4 oz Brush Top Plastic Jar	12/Case
HS11016	16 oz Brush Top Plastic Jar	12/Case
HS11128	1 Gallon Can	1

- GUARANTEES A PERFECT SEAL... UNDER ALL CONDITIONS



## Red Epoxy

When you need a sealant you can count on. High Performance, Heat Cured, Two Part, Epoxy Kit

- Exhibits a Color Change When Cured (Turns Gold)
- May Be Cured With a Hot Air Gun or Open Flame in Minutes
- -100°F to 300°F, (-73°C) to (149°C)
- Working Pressure in Excess of 3000 PSI
- Tensile Strength: 6000 PSI
- Works on Vertical Surfaces
- Pressure Tested to 3000 PSI
- Simple, Quick Mixing & Application
- Oil, Gas, Fuel & Solvent Resistant
- No Rush, No Wait, You Control Curing Time
- Equipment is Serviceable Immediately
- Use on All Metals and Rigid Plastics
- HVAC & Refrigeration
- Plumbing & Appliances
- Automotive & Marine
- Petrochemical, Manufacturing
- Industrial, Commercial, Institutional

PART NO.	SIZE	PKG
HS12001	Kit Including 2 1/2 oz Tubes	12/Case



## Solderlene

High Quality, Paste Type, Non-Acid Soldering Flux.

- Industrial strength wetting agents to promote solder flow
- For use with low and mid-temp. soft solders, both lead and lead-free
- Effective on all metals except aluminum and magnesium.
- Brush Top Plastic Jars
- Effective on all metals except aluminum and magnesium.

PART NO.	SIZE	PKG
HS30004	4 oz	12/Case
HS30016	16 oz	12/Case



## Thawzone (New Formula)

The original liquid dehydrant, frees your frozen system in minutes. It seeks out moisture and chemically bonds to it.

- Enhanced moisture control in even the most advanced systems.
- Aids with oil return in low temperature systems.
- Compatible with all refrigerants and refrigeration lubricants.
- Helps prevent the formation of acid.
- No Methanol
- Environmentally Sound
- Safer
- Biodegradable, non-polluting
- Non-Poisonous

PART NO.	BOTTLE SIZE	PKG
HS17001	1 oz	24/Case
HS17004	4 oz	12/Case
HS17016	16 oz	6/Case

Add 1/8 fluid ounce ( 3.75 ml ) of THAWZONE directly to the refrigerant of any system for every 1 lb. of refrigerant in the system.

\*HIGHSIDE SYSTEM INJECTOR (part no. HSINJ001) IS RECOMMENDED FOR INTRODUCING THAWZONE INTO AN OPERATING SYSTEM.



## Spiro Lite UV Bulb

120 Volt Florescent UV Light Source  
For Your Light Trouble

PART NO.	PKG
HSUVB001	1