

Icemakers

Mechanical Style Icemakers

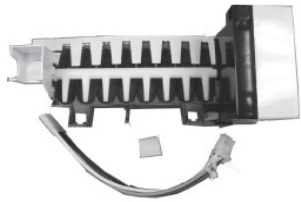
Each Kit Features:

- Complete harness for direct replacement
- Includes mounting hardware
- Installs easily using existing harness or provided harness
- Water fill adjustment to compensate for varying water pressure
- Each unit has automatic and manual shut-off feature
- Thermal safety cut-out prevents mold element overheating
- Eight cavity mold forms crescent shaped cubes
- Multi-position water inlet from side, rear, or top fill

Optimize Ice Production

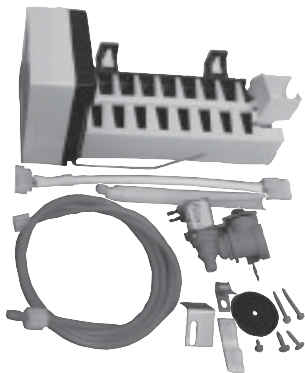
- Set freezer to below 10°F
Colder setting, more ice. From 1 lb. to 10 lbs. per 24 hr/day
- Install water filter
For better taste, reduces corrosion in icemaker

Just need a bare icemaker and not the kits? Checkout the RIM116 for the Mechanical style and the RIM900 for the Modular Style.



RIM116 Replacement Icemaker

RIM116 is designed as a direct replacement icemaker only. This service unit will plug-in as a direct replacement for the standard mechanical style icemaker. Used in all major brands, also replaces the old Gemline icemakers and Supco's mechanical style icemakers.



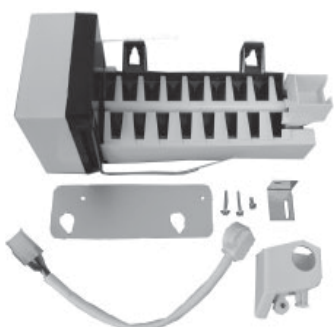
Electrolux RIM115 Icemaker Service Kit

RIM115 was designed to be a direct replacement for the Electrolux IM115 and 218736300 service and prewired installation kits. Kit includes: Icemaker, ice bin, hardware kit, fill line, fill tube, and water valve. Add a WF271 water filter.



Electrolux RIM400 Icemaker Installation Kit

RIM400 was designed to be a direct replacement for the Electrolux IM34 and 218734400 service and prewired installation kits. Kit includes: Icemaker, ice bin, hardware kit, wiring harness, fill line, fill tube, and water valve. Add a WF271 water filter.



General Electric RIM300 Icemaker Service Kit

RIM300 was designed to be a direct replacement for the General Electric IM1 through IM3 series and the UKKIT series icemakers. This Service unit comes with icemaker, adapter mounting plate, wiring harness and hardware. Excellent service kit for over 75 GE part numbers.

Icemakers

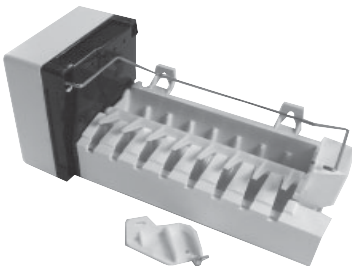
Maytag Flex Tray Icemakers

The RIM655 by Gem Products is not available. However if a replacement icemaker for the RIM655 is needed use the RIM116 and your old hardware/harness. If you are working on an original Admiral flex tray system and need the flex tray Admiral 59688-1 order the Supco GA277.



Maytag RIM117 Replacement Icemaker Kit

RIM117 was designed to replace the Amana IC series mechanical style icemakers. The kit includes: Icemaker, harnesses, and fill tube. Some models used modular head icemakers, see RIM900 for replacing modular head icemakers. See cross reference for specific applications.



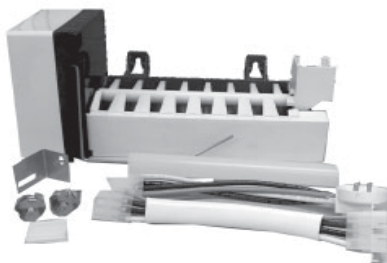
Maytag RIM900 Icemaker Service Kit

RIM900 is a direct replacement for a burnt out modular icemaker. This kit includes: Icemaker and the most popular wiring harness. The old harness can be used. Need just the modular head see IMM8366, need the harvest thermostat see SL7985. See cross reference page for specific applications.



Maytag IMM8366 Icemaker Modular Head

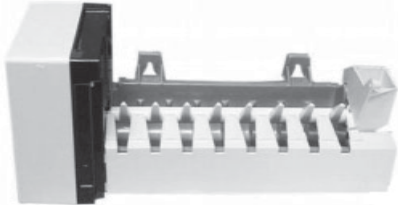
IMM8366 Modular Head is a direct replacement for existing modular head icemakers. Used in Kenmore, Kitchenaid, Maytag, Roper, Sub-Zero, and Whirlpool icemakers. A quick rebuild for an icemaker, see the SL7985 harvest thermostat to finish the job. Replaces Whirlpool 628366, 628519, and Maytag R0156628.



Maytag RIM500 Icemaker Service Kit

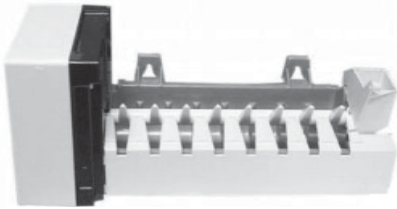
Supco's RIM500 was designed to replace the Gemline RIM500 and RIM550. This service unit replaces the mechanical style Admiral/Maytag units. The kit includes: Icemaker, harnesses, and fill tube. Unit also includes harnesses to replace Whirlpool 4317943 and 978556.

Icemakers



Maytag RIM943 Icemaker Kit

RIM943 Icemaker Kit is designed to replace the modular icemaker service kit. Kit includes icemaker with cover, lever arm, and 4 harnesses. See cross reference page for specific applications.



Sub-Zero RIM943 Icemaker Kit

RIM943 Icemaker Kit is designed to replace the modular icemaker service kit. Kit includes icemaker with cover, lever arm, and 4 harnesses. Replaces Sub-Zero 4201760, Use RIM900 or RIM943 for 450520, 420521, or 420522. Replacement Module use IMM8366, Replacement Harvest thermostat use SL7985.



Whirlpool Flex Tray Icemakers

The RIM700 by Gem Products is not available. However if a replacement icemaker for the RIM700 is needed use the RIM116 and your old hardware/harness. If a replacement icemaker cannot be found or is not required by the customer, use SUPCO SA1005 defrost control to make the refrigerator useable without the icemaker function.



Whirlpool RIM313 Icemaker Installation Kit

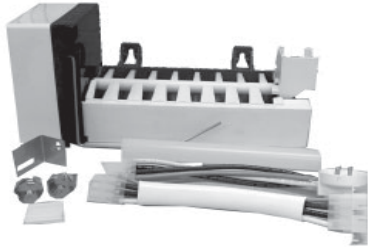
RIM313 was designed to replace the Whirlpool 1129313 and ECKMF-64 icemaker installation kits. Kit includes icemaker with cover, lever arm, hardware, wiring harness, water valve, fill tubes, fill line, and ice bin. See cross reference page for specific applications. Add a WF271 water filter.



Whirlpool RIM316 Icemaker Installation Kit

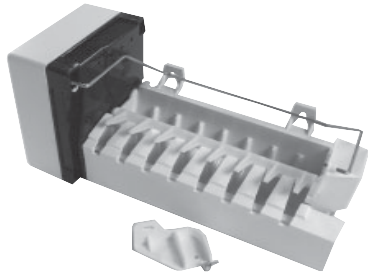
RIM316 was designed to replace the Whirlpool 1129316 and ECKMF-90 icemaker installation kits. Kit includes icemaker with cover, lever arm, hardware, wiring harness, water valve, fill tubes, fill line, and ice bin. See cross reference page for specific applications. Add a WF271 water filter.

Icemakers



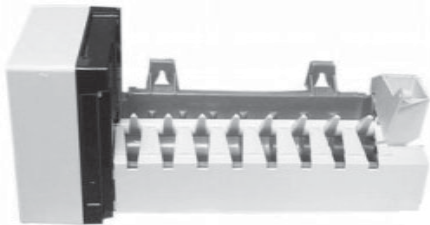
Whirlpool RIM500 Icemaker Service Kit

Supco's RIM500 is a direct replacement for the Whirlpool 978566 mechanical style and the 4317943 modular icemaker. The kit includes: Icemaker, 2 harnesses, and fill tube. This service kit includes 2187464 straight harness and the 7" round hose.



Whirlpool RIM900 Icemaker Service Kit

RIM900 is a direct replacement for a burnt out modular icemaker. This kit includes: Icemaker and the most popular wiring harness. The old harness can be used. Need just the modular head see IMM8366, need the harvest thermostat see SL7985. See cross reference page for specific applications.



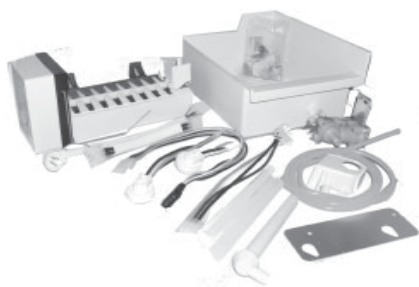
Whirlpool RIM943 Icemaker Kit

RIM943 Icemaker Kit is designed to replace the Whirlpool 4317943 modular icemaker service kit. This direct replacement kit includes icemaker with cover, lever arm, and 4 harnesses. See cross reference page for specific applications.



Whirlpool IMM8366 Icemaker Modular Head

IMM8366 Modular Head is a direct replacement for existing modular head icemakers. Used in Kenmore, Kitchenaid, Maytag, Roper, Sub-Zero, and Whirlpool icemakers. A quick rebuild for an icemaker, see the SL7985 harvest thermostat to finish the job. Replaces Whirlpool 628366, 628519.



Universal for all Major Brands RIM2000 Icemaker Service Kit

RIM2000 is designed as a universal replacement icemaker kit. This service kit will plug-in as a direct replacement or can be used as a new icemaker for pre-wired refrigerators. Used in all major brands, also replaces the old Gemline icemakers and Supco's mechanical style icemakers. See cross reference for suggested applications.

Icemaker Parts

Direct Replacement Icemaker Harvest Thermostats

These Direct Replacement Icemaker Release Thermostats cycle the icemaker into harvest mode once the ice cubes have released from ice mold. Replacements for mechanical and modular style icemakers.



Style A

Used on New Style Mechanical

Icemaker Harvest Thermostats

Brand	Replaces OEM No.	Exact Supco No.	Open °F	Close °F	Diff. °F	Style
Electrolux	3206322	SL6322	48	15	33	A
GEWR50X22	SL5022	26	16	10	B	
Maytag	625844	SL5844	48	18	30	C
95092-1	SL7985	32	17	15	D	
R0161023	SL5844	48	18	30	C	
R0161036	SL5844	48	18	30	C	
R0161060	SL7985	32	17	15	D	
Sub-Zero	627180	SL5844	48	18	30	C
627985	SL7985	32	17	15	D	
Whirlpool	625844	SL5844	48	18	30	C
627051	SL5844	48	18	30	C	
627180	SL5844	48	18	30	C	
627985	SL7985	32	17	15	D	



Style B

GE Style with Plug



Style C

Used on Old Style Modular



Style D

Used on Current Style Modular



Icemaker Safety Fuse

SL6319 Direct Replacement Safety Fuse for mechanical style icemakers. Used in Electrolux, GE, Haier, and others. Replaces Electrolux 3206319



Icemaker Cycle Switch

ES16802 Replaces the cycling switches in mechanical style icemakers. The ES16802 switch can be used interchangeably for the shut-off switch, water fill switch, or the hold switch. This SPDT microswitch has 3/16" terminals and is widely used in thousands of applications. Electrolux 5303917595, Sub-Zero / Whirlpool 627512

Icemaker Parts



Icemaker Drive Gear

GA31 Drive gear for mechanical style icemakers. Replaces Electrolux 3206301, GE WR29X5162, Maytag R0183094, and Whirlpool 628210



Icemaker Drive Motor (Mechanical Style)

IMM6306 is a direct replacement for current production mechanical style icemakers. Used in Electrolux, GE, Gemline, Haier, Supco Mechanical and most other mechanical style icemakers. This motor retrofits to past models. Electrolux 3206306



Icemaker Drive Motor (Modular Head)

IMM8366 Module Head includes the replacement motor for modular icemakers. Rebuilding, don't forget the SL7985 harvest thermostat.



Icemaker Ice Bin

GA700 is a large replacement ice bin that is a direct replacement for hundreds of OEM bins. A great upgrade for many of the smaller ice bins used in older models. Injection molded white plastic bin is top rack dishwasher safe.

Icemaker Cross Reference

Electrolux Brands			General Electric Brands (Cont)			Maytag Brands (Cont)			Maytag Brands (Cont)		
OEM No.	Style	Supco No.	OEM No.	Style	Supco No.	OEM No.	Style	Supco No.	OEM No.	Style	Supco No.
218226700	MS	RIM116	WR30X186	MS	RIM300	047195-01	MH	RIM900	D7567104	MS	RIM115
218699501	MS	RIM116	WR30X187	MS	RIM300	10549201	MH	RIM900	D7579401	MS	Consider RIM2000
218713500	MS	RIM116	WR30X199	MS	RIM300	10563705	MH	RIM900	D7645001	MS	Consider RIM2000
218734400	MS	RIM400	WR30X203	MS	RIM300	10563705Q	MH	RIM900	D7733001	MS	Consider RIM2000
218736300	MS	RIM115	WR30X209	MS	RIM300	10563707	MH	RIM900	D7733101	MS	Consider RIM2000
21899501	MS	RIM116	WR30X211	MS	RIM300	10563708	MH	RIM900	D7767601	MH	RIM900
240352401	MS	RIM116	WR30X213	MS	RIM300	1110702A	MS	RIM115	D7824701	MH	RIM900
240352403	MS	RIM116	WR30X214	MS	RIM300	116310	MH	RIM900	D7824702	MH	RIM900
240352407	MS	RIM116	WR30X234	MS	RIM300	1165801A	MS	RIM2000	D7824703	MH	RIM900
240352409	MS	RIM116	WR30X237	MS	RIM300	1165807A	MS	RIM115	D7824704	MH	RIM900
240352412	MS	RIM116	WR30X238	MS	RIM300	1170101A	MS	RIM117	D7824705	MH	RIM900
52305-4	MH	RIM900	WR30X239	MS	RIM300	12001294	MH	RIM900	D7824705	MS	RIM2000
5303291912	MS	RIM116	WR30X241	MS	RIM300	12001302	MH	RIM900	D7824705Q	MH	RIM900
5303918277	MS	RIM116	WR30X253	MS	RIM300	12001302	MS	RIM116	D7824706	MH	RIM900
53105-2	MH	RIM900	WR30X253DS	MS	RIM300	12500010	MH	RIM900	D7824706Q	MH	RIM900
IK-4	MS	RIM400	WR30X253R	MS	RIM300	12500011	MH	RIM900	G1KSS	MH	RIM900
IK-7	MS	RIM400	WR30X254	MS	RIM300	12500012	MH	RIM900	G1KTM	MH	RIM900
IK-8	MS	RIM400	WR30X255	MS	RIM300	12500048	MS	RIM2000	HMG-9012	MH	RIM900
IK-9	MS	RIM115	WR30X259	MS	RIM300	1301601A	MS	RIM2000	HMG-9013	MH	RIM900
IM115	MS	RIM115	WR30X280	MS	RIM300	1327001PA	MS	RIM2000	HMG-9018	MH	RIM900
IM34	MS	RIM400	WR30X282	MS	RIM300	52304-1	MH	RIM900	HMG-9020	MH	RIM900
RA-43714-1	MH	RIM900	WR30X282R	MS	RIM300	52305-1	MH	RIM900	IC11B	MH	RIM900
RA-43714-10	MH	RIM900	WR30X283	MS	RIM300	52305-3	MH	RIM900	IC11B	MS	RIM115
RA-43714-11	MH	RIM900	WR30X284	MS	RIM300	52305-6	MH	RIM900	IC2	MH	RIM900
RA-43714-12	MH	RIM900	WR30X289	MS	RIM300	52305-8	MH	RIM900	IC2	MS	RIM117
RA-43714-14	MH	RIM900	WR30X290	MS	RIM300	53105-1	MH	RIM900	IC3	MH	RIM900
RA-43714-2	MH	RIM900	WR30X304	MS	RIM300	53105-2	MH	RIM900	IC3	MS	RIM115
RA-43714-4	MH	RIM900	WR30X304	MS	RIM300	53105-37	MH	RIM900	IC3H	MH	RIM900
RA-43714-6	MH	RIM900	WR30X304R	MS	RIM300	53105-47	MH	RIM900	IC3H	MS	RIM115
RA-43714-8	MH	RIM900	WR30X305	MS	RIM300	53105-7	MH	RIM900	IC3K	MH	RIM900
RA-43714-9	MH	RIM900	WR30X306	MS	RIM300	61005508	MH	RIM900	IC3K	MS	RIM115
General Electric Brands			WR30X307	MS	RIM300	62577-1	MH	RIM900	IC3Q	MH	RIM900
OEM No.	Style	Supco No.	WR30X310	MS	RIM300	62577-11	MH	RIM900	IC3Q	MS	RIM115
M-1	MS	RIM2000	WR30X315	MS	RIM300	62577-13	MH	RIM900	IC4	MH	RIM900
IM1R	MS	RIM2000	WR30X316	MS	RIM300	62577-4	MH	RIM900	IC4	MS	RIM117
IM-2	MS	RIM2000	WR30X318	MS	RIM300	62577-5	MH	RIM900	IC4N	MH	RIM900
IM2R	MS	RIM2000	WR30X320	MS	RIM300	62577-6	MH	RIM900	IC4N	MS	RIM117
IM3	MS	RIM300	WR30X326	MS	RIM300	62577-7	MH	RIM900	IC4Q	MH	RIM943
IM-3	MS	RIM2000	WR30X327	MS	RIM300	65638-1	MH	RIM900	IC4R	MH	RIM900
IM3R	MS	RIM2000	WR30X328	MS	RIM300	67001263	MH	RIM900	IC4R	MS	RIM117
IM-4	MS	RIM2000	WR30X329	MS	RIM300	67001740	MH	RIM900	IC5	MS	Consider RIM2000
IM-6	MS	RIM2000	WR30X330	MS	RIM300	67005153	MH	RIM900	IC52	MS	Consider RIM20
IMG3	MS	RIM300	Gemline			68111-1	MH	RIM900	IC52E	MS	Consider RIM20
JS2	MS	RIM2000	OEM No.	Style	Supco No.	68972-1	MH	RIM900	IC6	MH	RIM900
JS3	MS	RIM2000	RIM1000	MS	RIM2000	68972-4	MH	RIM900	IC6	MS	RIM400
MSE1	MS	RIM2000	RIM200	MS	RIM116	69452302	MH	RIM900	IC7	MH	RIM900
UKKIT1	MS	RIM300	RIM2000	MS	RIM2000	69452310	MH	RIM900	IC7	MS	RIM400
UKKIT2	MS	RIM300	RIM300	MS	RIM300	69452329	MH	RIM900	IC8	MH	RIM900
UKKIT3S	MS	RIM300	RIM313	MS	RIM313	69452337	MH	RIM900	IC8	MS	RIM115
UKKIT4	MS	RIM300	RIM316	MS	RIM316	69463673	MH	RIM900	IC9	MS	Consider RIM2000
UKKIT5	MS	RIM300	RIM321	MS	RIM117	95091-1	MH	RIM900	IC9T	MS	Consider RIM2000
WR29X5144	MS	RIM300	RIM400	MS	RIM400	95098-1	MH	RIM900	IK1ANS	MH	RIM900
WR30M149	MS	RIM300	RIM500	MS	RIM500	95109-1	MH	RIM900	IK1ANT	MH	RIM900
WR30M153	MS	RIM300	RIM550	MS	RIM500	C3641505	MS	RIM2000	IK1FNS	MH	RIM900
WR30X112	MS	RIM300	RIM650	MS	RIM117	C3641510	MS	RIM2000	IK1FNT	MH	RIM900
WR30X129	MS	RIM300	Maytag Brands			CIKHTM-1V	MH	RIM900	IK1HNS	MH	RIM900
WR30X134	MS	RIM300	OEM No.	Style	Supco No.	CK177TM	MH	RIM900	IK1HNT	MH	RIM900
0054450	MS	RIM116	0054450	MS	RIM116	CK277SS-1V	MH	RIM900	IK76DP	MH	RIM900
WR30X138	MS	RIM300	0054498	MS	RIM115	D7036801	MS	RIM2000	IK76DP-1	MH	RIM900
WR30X141	MS	RIM300	0056254	MS	Consider RIM2000	D7036802	MS	RIM2000	IK78NS	MH	RIM900
WR30X142	MS	RIM300	0056504	MH	RIM900	D7036805	MS	RIM2000	IK78NT	MH	RIM900
WR30X147	MS	RIM300	0056599	RHO	IMM8366	D7036814	MS	RIM2000	IKIANT	MH	RIM900
WR30X148	MS	RIM300	0056605	MH	RIM900	D7190101	MS	Consider RIM2000	MGIMKS	MH	RIM900
WR30X159	MS	RIM300	0056606	MH	RIM900	D7208401	MS	Consider RIM2000	MGIMKT	MH	RIM900
WR30X163	MS	RIM300	0311155	MH	RIM900	D7208402	MS	Consider RIM2000	MHIK7989	MH	RIM900
WR30X169	MS	RIM300	0312578	MH	RIM900	D7208404	MS	Consider RIM2000			
WR30X170	MS	RIM300	0312738	MH	RIM900	D7261701	MS	RIM2000			
WR30X175	MS	RIM300	0312739	MH	RIM900	D7261704	MS	RIM2000			
WR30X176	MS	RIM300	0312740	MH	RIM900	D7567101	MS	RIM115			

Styles: MH = Modular Head; MS = Mechanical Style; RHO = Replacement Head Only for Modular Style Icemaker TM= Timer Only

Icemaker Cross Reference

Maytag Brands (Cont)			Whirlpool Brands (Cont)			Whirlpool Brands (Cont)			Whirlpool Brands (Cont)		
OEM No.	Style	Supco No.	OEM No.	Style	Supco No.	OEM No.	Style	Supco No.	OEM No.	Style	Supco No.
MIP85S	MH	RIM900	1108106	MH	RIM943	482020	MH	RIM943	627572	MS	RIM500
MIP85T	MH	RIM900	1108106	MS	RIM316	482394	MH	RIM943	627797	RHO	IMM8366
MIP85T-2	MH	RIM900	1108154	MH	RIM943	482394	MS	RIM500	627801	RHO	IMM8366
NISS	MH	RIM900	1108154	MS	RIM316	482433	MH	RIM943	627811	RHO	IMM8366
NITM	MH	RIM900	1114185	MH	RIM943	482433	MS	RIM500	627816	RHO	IMM8366
R0000209	MS	RIM2000	1114185	MS	RIM313	482671	TM	SA1005	628134	RHO	IMM8366
R0130847	MS	RIM2000	1114209	MH	RIM943	482990	MH	RIM943	628135	RHO	IMM8366
R0154025	MH	RIM900	1114209	MS	RIM316	482990	MS	RIM500	628247	RHO	IMM8366
R0156628	RHO	IMM8366	1118554	MH	RIM943	483042	RHO	IMM8366	628258	RHO	IMM8366
R0156629	MH	RIM900	1118554	MS	RIM313	483101	RHO	IMM8366	628302	RHO	IMM8366
R0156669	MH	RIM900	1118555	MH	RIM943	483105	RHO	IMM8366	628305	RHO	IMM8366
R0156806	MS	RIM115	1118746	MH	RIM943	625601	MH	RIM943	628332	RHO	IMM8366
R0156806	MH	RIM900	1118746	MS	RIM313	625601	MS	RIM500	628342	RHO	IMM8366
R0156806	MS	RIM115	1118766	MH	RIM943	625603	MH	RIM943	628357	RHO	IMM8366
R0161059	MH	RIM900	1118766	MS	RIM316	625603	MS	RIM500	628366	RHO	IMM8366
R0161061	MH	RIM900	1127599	MH	RIM943	625610	MH	RIM943	628384	TM	SA1005
R0167201	MH	RIM900	1127599	MS	RIM316	625610	MS	RIM500	628384R	TM	SA1005
R0167202	RHO	IMM8366	1129303	MH	RIM943	625611	MH	RIM943	628386	TM	SA1005
R0167203	RHO	IMM8366	1129303	MS	RIM316	625611	MS	RIM500	628398	RHO	IMM8366
R0175018	MS	Consider RIM2000	1129306	MH	RIM943	625622	MH	RIM943	628399	RHO	IMM8366
R0175019	MS	Consider RIM2000	1129306	MS	RIM316	625622	MS	RIM500	797991	MH	RIM943
R0175020	MH	RIM900	1129312	MH	RIM943	625625	MH	RIM943	797991	MS	RIM500
R0175020	MS	RIM117	1129312	MS	RIM313	625625	MS	RIM500	8114	MH	RIM943
R0175021	MS	RIM115	1129313	MS	RIM313	625653	MH	RIM943	8114	MS	RIM500
R0183135	MH	RIM900	1129314	MH	RIM943	625653	MS	RIM500	833701	MH	RIM943
R0194462	RHO	IMM8366	1129316	MS	RIM316	625656	MH	RIM943	8340	MS	RIM2000
R0194666	RHO	IMM8366	1129318	MH	RIM943	625656	MS	RIM500	8390	MS	RIM2000
R0950064	RHO	IMM8366	1129318	MS	RIM316	625660	MH	RIM943	8550	MH	RIM943
RA43714-1	MH	RIM900	2155184	MH	RIM943	625660	MS	RIM500	8550	MS	RIM500
RA43714-10	MH	RIM900	2155185	MS	RIM943	626002	MH	RIM943	940556	MH	RIM943
RA43714-11	MH	RIM900	2155185	MS	RIM316	626201	MH	RIM943	940556	MS	RIM313
RA43714-12	MH	RIM900	2155186	MS	RIM943	626201	MS	RIM500	941555	MH	RIM943
RA43714-14	MH	RIM900	2155186	MS	RIM316	626237	MH	RIM943	941555	MS	RIM313
RA43714-2	MH	RIM900	2155187	MS	RIM943	626237	MS	RIM500	944804	MH	RIM943
RA43714-4	MH	RIM900	2155187	MS	RIM316	626366	MH	RIM943	944804	MS	RIM316
RA43714-6	MH	RIM900	2155188	MS	RIM943	626366	MS	RIM500	978552	MH	RIM943
RA43714-8	MH	RIM900	2155188	MS	RIM316	626461	MH	RIM943	978552	MS	RIM500
RA43714-9	MH	RIM900	2155468	MS	RIM2000	626461	MS	RIM500	978553	MH	RIM943
RA95019-1	MH	RIM900	2155469	MS	RIM316	626489	MH	RIM943	978553	MS	RIM500
RA95020-1	MH	RIM900	2155469A	MS	RIM2000	626489	MS	RIM500	978556	MH	RIM943
RKE	MH	RIM900	2171718	MS	RIM400	626500	TM	SA1005	978556	MS	RIM500
UKI1000AXX	MS	RIM2000	2171811	MS	RIM2000	626501	TM	SA1005	978556	MS	RIM500
UKI1500AXX	MS	RIM2000	2198597	MH	RIM943	626502	TM	SA1005	984827	MH	RIM943
UNIVM98	MS	RIM116	4210317	MH	RIM943	626503	TM	SA1005	984827	MS	RIM313
Sub-Zero			4210317	MS	RIM500	626504	TM	SA1005	987613	MH	RIM943
OEM No.	Style	Supco No.	4211173	MH	RIM943	626505	TM	SA1005	987613	MS	RIM313
4200520	MH	RIM900	4211173	MS	RIM500	626506	TM	SA1005	AMKIT97	MS	RIM2000
4200521	MH	RIM900	4317943	MH	RIM943	626507	TM	SA1005	ECKMF-64	MH	RIM943
4200522	MH	RIM900	4317943	MS	RIM500	626508	TM	SA1005	ECKMF-64	MS	RIM313
4201760	MH	RIM943	468150	MH	RIM943	626511	TM	SA1005	ECKMF-90	MH	RIM943
628366	RHO	IMM8366	480616	MH	RIM943	626512	TM	SA1005	ECKMF-90	MS	RIM316
Whirlpool Brands			480616	MS	RIM500	626513	TM	SA1005	ECKMF-94	MH	RIM943
OEM No.	Style	Supco No.	480617	MH	RIM943	626514	TM	SA1005	ECKMF-94	MS	RIM316
8114	MH	RIM943	480617	MS	RIM500	626517	TM	SA1005	ECKMF-97	MH	RIM943
8340	MS	RIM2000	482014	MH	RIM943	626519	TM	SA1005	ECKMF-97	MS	RIM316
8390	MS	RIM2000	482014	MS	RIM500	626519R	TM	SA1005	IMKIT	MH	RIM943
8550	MH	RIM943	482015	MH	RIM943	626520	TM	SA1005	KIMF81	MH	RIM943
81503	MS	RIM2000	482015	MS	RIM500	626522	TM	SA1005	KIMS8	MH	RIM943
4389195	TM	SA1005	482016	MH	RIM943	626524	TM	SA1005			
106.8114	MH	RIM943	482016	MS	RIM500	626608	MH	RIM943			
106.81503	MS	RIM2000	482017	MH	RIM943	626608	MS	RIM500			
106.8340	MS	RIM2000	482017	MS	RIM500	626609	MH	RIM943			
106.8390	MS	RIM2000	482018	MH	RIM943	626609	MS	RIM500			
106.8550	MH	RIM943	482018	MS	RIM500	626626	MH	RIM943			
1105298	MH	RIM943	482019	MH	RIM943	626626	MS	RIM500			
1105298	MS	RIM313	482019	MS	RIM500	627572	MH	RIM943			

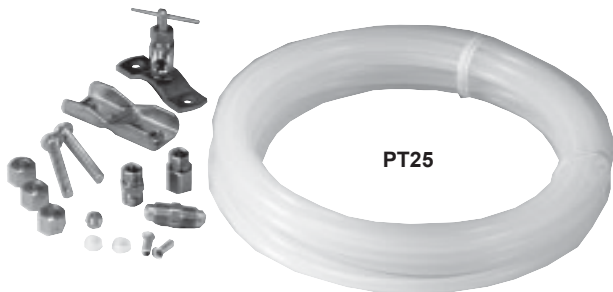
Note: Some manufacturer's include splices to direct wire icemakers into older applications. Supco does not recommend direct wiring.

Styles: MH = Modular Head; MS = Mechanical Style; RHO = Replacement Head Only for Modular Style Icemaker TM= Timer Only

Icemaker Parts

Icemaker / Humidifier Installation Kits

Supco No.	Description	Tubing	Valve	Valve Type	Connection At Tap	Connection At Appliance
IST2	Valve and Fittings, no tubing	STV2	Self Tapping	1/4" compression	1/4" compression
PT25	Valve, 25 foot plastic tubing and all fittings	Plastic	STV2	Self Tapping	1/4" compression	1/4" compression
PT25E	Valve, 25 foot plastic tubing and 2 most popular fittings	Plastic	STV2	Self Tapping	1/4" compression	1/4" compression
C15	Valve, 15 foot 1/4" O.D. copper tubing and all fittings	Copper	STV2	Self Tapping	1/4" compression	1/4" compression
C25	Valve, 25 foot 1/4" O.D. copper tubing and all fittings	Copper	STV2	Self Tapping	1/4" compression	1/4" compression
C15F	Valve, 15 foot 1/4" O.D. copper tubing and all fittings, and one flare	Copper	STV2	Self Tapping	1/4" compression	1/4" Flare
C25F	Valve, 25 foot 1/4" O.D. copper tubing and all fittings, and one flare	Copper	STV2	Self Tapping	1/4" compression	1/4" Flare
C15D	Valve, 15 foot 1/4" O.D. copper tubing and all fittings	Copper	STV2D	Pre-Drill	1/4" compression	1/4" Flare
C25D	Valve, 25 foot 1/4" O.D. copper tubing and all fittings	Copper	STV2D	Pre-Drill	1/4" compression	1/4" Flare
C15FD	Valve, 15 foot 1/4" O.D. copper tubing and all fittings, and one flare	Copper	STV2D	Pre-Drill	1/4" compression	1/4" Flare
C25FD	Valve, 25 foot 1/4" O.D. copper tubing and all fittings, and one flare	Copper	STV2D	Pre-Drill	1/4" compression	1/4" Flare



Icemaker Installation Kit Quick Chart

Brand	OEM No.	Supco No.
Electrolux	5305510264	C25
	S5305510264	C25D
Maytag	18001005	C25D
	18001006	PT25E
	25001812	C25D
	25002012	C25
Whirlpool	8003	C25D

Water Filters



WF270



WF271

In-line Water Filters

Designed to replace most inline charcoal and carbon water filters. These high capacity filters remove sediment, chlorine taste, and odor from water. Excellent for icemakers, coffee makers, and water dispensers.

Features

- Improves taste and odor
- Removes particulates and turbidity
- High capacity
- Replaces charcoal and carbon filled filters.
- Rated 20 to 125 PSI to work on municipal water systems
- Installs using standard 1/4" Compression fittings
- Filtration to 20 microns
- For use on approved water systems to improve water quality

Supco No.	Filter Media	Capacity Gallons	Max. Flow Gal/Min	Pounds per Day	Length	Diameter	Taste / Odor	Scale / Lime
WF270	Carbon	1,000	1	65	6 3/8"	1 5/8"	Yes	No
WF271	Carbon	4,000	1	100	10"	2 1/4"	Yes	No

Direct Replacement Water Filters

WF282 Direct Replacement Water Filter Cartridge

Designed as a direct replacement for many models. Follow appliance users manual for installation. Filter is for use on approved water supplies to improve water quality. See filter capability below.

Features

- Typical particle reduction .5 to 1 micron
- Pressure range 40 to 125 PSI
- Temperature range 33° to 100°F
- Removes sediment and particulates
- Rated at 750 gallons or 6 months
- Rated at .5 GPM 1.9 LPM @ 60 PSI

- Direct replacement
- Improves taste and odor

Reduces

- Atrazine 76.00%
- Chlorine 97.00%
- Cysts 99.99%
- Lead 99.00%
- Lindane 99.00%
- Sediment 99.00%
- Turbidity 99.00%



WF282 Replaces	
GE	GSWF
Sears /Kenmore	9914 46-9914

Water Filters

WF284 Direct Replacement Water Filter Cartridge

Designed as a direct replacement for the enhanced and standard water filters. Follow appliance users manual for installation. Filter is for use on approved water supplies to improve water quality. See filter capability below.



Features

- Typical particle reduction to 1 micron
- Pressure range 20 to 100 PSI
- Temperature range 33° to 100°F
- Removes sediment and particulates
- Rated at 400 gallons or 6 months
- Direct replacement, not a kit
- Improves taste and odor
- Body size 4" X 1 3/4" OAL 4 1/4"

Reduces

2,4-D (Herbicide)	94.20%
Atrazine	94.90%
Chlorine (Class I)	97.80%
Cysts	99.99%
Lead	99.00%
Particulates Class I)	99.80%
Toxaphene (Pesticide)	87.50%
Turbidity	99.70%

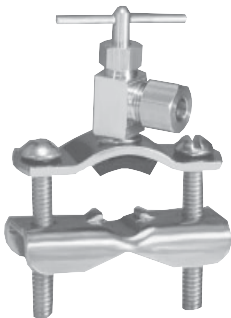
WF284				
Replaces				
Electrolux	218710901	Pure Source	RC101	
	218710902		RC200	
	218717805		RF100	
	240389101		RF200	
	5303917752		RG100	
	5303917836		Sears / Kenmore	46-9906
	5303917937			46-9906P
	5303918017			46-9910
	WF1CB			46-9910P
	WFB			9906
WFCB	9906P			
		9910		
		9910P		

Valves & Fittings

STV Series Self-Tapping Water Valves

Features

- Self piercing on copper tubing or 0.035" wall hard PVC
- Fits 3/8" O.D. through 1 3/8" O.D. tubing or pipe
- Can be installed on pipe with existing hole
- Stainless steel piercing needle

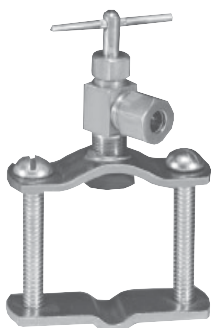


PART NO.	FLOW RATE	OUTLET	PIERCING NEEDLE	APPLICATION	COMMENTS
STV2	1 GPM	1/4" Comp.	1/8" Dia. (Hollow)	Ice Maker Kits	Reversible lower bracket
STV3	1 GPM	1/4" Comp.	1/8" Dia. (Hollow)	Humidifier Kits	
STV4	1 GPM	1/4" Comp.	3/32" Dia. (Solid, retractable)	Humidifier Kits	1/8" M.P.T. on body valve included

STV2D Conventional "Drill" Type Valve

Features

- Must pre-drill 1/4" hole in pipe or tubing
- Increased water flow from standard water valve
- Fits up to 1 3/8" O.D. Copper tubing
- Fits 1/2" or 3/4" galvanized iron water pipe
- Maximum water temperature 180°F/82°C
- Includes all fittings for 1/4" O.D. copper and plastic tubing



Relays, Overloads & Hard Starts

For Refrigeration Systems Without Run Capacitors

SUPCO offers the most complete line of refrigeration relays, overloads and hard starts in the industry. For refrigeration systems with and without run capacitors, just choose the right combination for your application. All combinations are pre-wired for fast installation.



ICG

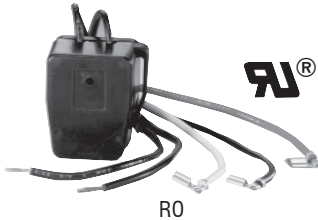
ICG and PO Series Relays

Features/Benefits

- ICG Series features a “snap-on” bracket
- PO Series installs on compressors with “pin-type” terminals.
- Fastest cool down time of any solid state relays
- Can be used with and without start capacitor.

Applications

- One size for all compressors from 1/12 hp through 1/2 hp.
- Replaces all current type relays.



RO

RO & PRO Series Relay and Overload Combinations

Features/Benefits

- RO Series features “snap-on” bracket
- PRO Series installs on “pin-type” terminal.
- Locked rotor protection eliminates start winding overheating
- Can be used with and without start capacitor motors from 1/4 to 1/3 hp.

Applications

- Select the right match to replace refrigerator compressor relay and overload units from 1/12 through 2/3 hp, 115 – 230 VAC.



RSC

RSC Series Relay and Start Capacitor Combination

Features/ Benefits

- Replaces current-type relays
- Provides a boost for hard start and unbalanced systems
- Prevents low voltage starting problems
- No additional wires required

Applications

- One size for all compressors from 1/12 hp through 1/2 hp.
- For domestic and commercial refrigeration systems and freezers



RCO

RCO Series 3 N' 1 Relay, Overload and Start Capacitor Combination

Features/Benefits

- Replaces relay, overload and provides a boost for hard start and unbalanced systems
- Prevents low voltage starting problems

Applications

- Select the right match to replace refrigerator compressor relay and overload units from 1/12 through 2/3 hp, 115 – 230 VAC.
- For all capillary systems



SS410

SS410 Super Start Relay Overload Combination

Features/Benefits

- Equipped with an electro-mechanical relay, locked rotor protector and a 255 mfd start capacitor.
- Increases torque to its maximum capacity

Applications

- For all motors including high starting torque motors from 1/4 to 1/3 hp.

Selection Table For Refrigeration Systems Without Run Capacitors

SUPCO NO.	RELAY	OVERLOAD	START CAPACITOR	MOUNTING	HP RATING	VOLTAGE (VAC)
ICG1	*			Quick Connect	1/12 - 1/2	115
ICG-220	*			Quick Connect	1/12 - 1/2	230
PO115	*			Push - on	1/12 - 1/2	115
PO230	*			Push - on	1/12 - 1/2	230
RO81	*	*		Quick Connect	1/12 - 1/5	115
RO41	*	*		Quick Connect	1/4 - 1/3	115
RO21	*	*		Quick Connect	1/2	115
RO82	*	*		Quick Connect	1/12 - 1/8	230
RO62	*	*		Quick Connect	1/6 - 1/5	230
RO42	*	*		Quick Connect	1/4 - 1/3	230
RO22	*	*		Quick Connect	1/2 - 2/3	230
PRO81	*	*		Push - on	1/12 - 1/5	115
PRO41	*	*		Push - on	1/4 - 1/3	115
PRO21	*	*		Push - on	1/2	115
PRO82	*	*		Push - on	1/12 - 1/8	230
PRO62	*	*		Push - on	1/6 - 1/5	230
PRO42	*	*		Push - on	1/4 - 1/3	230
PRO22	*	*		Push - on	1/2 - 2/3	230
RSC10	*		*	Quick Connect	1/12 - 1/2	115
RSC20	*		*	Quick Connect	1/12 - 1/2	230
RCO810	*	*	*	Quick Connect	1/12 - 1/5	115
RCO410	*	*	*	Quick Connect	1/4 - 1/3	115
RCO210	*	*	*	Quick Connect	1/2	115
RCO820	*	*	*	Quick Connect	1/12 - 1/8	230
RCO620	*	*	*	Quick Connect	1/6 - 1/5	230
RCO420	*	*	*	Quick Connect	1/4 - 1/3	230
RCO220	*	*	*	Quick Connect	1/2	230
SS410	*	*	*	Quick Connect	1/4 - 1/3	115

Relays, Overloads & Hard Starts

For Refrigeration Systems With Run Capacitors

For servicing newer technology systems developed during the last decade. These relays, overloads and hard start combinations can also be used on systems without run capacitors.



UPRO



URO & UPRO Series Relay and Overload Combinations

Features/Benefits

- Safe, reliable, long lasting PTC relay
- Locked rotor protection eliminates start winding overheating
- Can be used with and without start

Applications

- Select the right match to replace refrigerator compressor relay and overload units from 1/12 through 2/3 hp, 115 – 230 VAC.



URSC



URSC Series Relay and Start Capacitor Combination

Features/Benefits

- Replaces current-type relays
- Provides a boost for hard start and unbalanced systems
- Prevents low voltage starting problems
- No additional wires required

Applications

- One size for all compressors from 1/12 hp through 1/2 hp.
- For domestic and commercial refrigeration systems and freezers



URCO



URCO Series 3 N' 1 Relay, Overload and Start Capacitor Combination

Features/Benefits

- Replaces relay, overload and provides a boost for hard start and unbalanced systems
- Prevents low voltage starting problems

Applications

- Select the right match to replace refrigerator compressor relay and overload units from 1/12 through 2/3 hp, 115 – 230 VAC.

Selection Table For Refrigerator Systems With Run Capacitors

SUPCO NO.	RELAY	OVERLOAD	START CAPACITOR	MOUNTING	HP RATING	VOLTAGE (VAC)
URO81	*	*		Quick Connect	1/12 - 1/5	115
URO41	*	*		Quick Connect	1/4 - 1/3	115
URO21	*	*		Quick Connect	1/2	115
URO82	*	*		Quick Connect	1/12 - 1/8	230
URO62	*	*		Quick Connect	1/6 - 1/5	230
URO42	*	*		Quick Connect	1/4 - 1/3	230
URO22	*	*		Quick Connect	1/2 - 2/3	230
UPRO81	*	*		Push - on	1/12 - 1/5	115
UPRO41	*	*		Push - on	1/4 - 1/3	115
UPRO82	*	*		Push - on	1/12 - 1/8	230
UPRO62	*	*		Push - on	1/6 - 1/5	230
UPRO42	*	*		Push - on	1/4 - 1/3	230
UPRO22	*	*		Push - on	1/2 - 2/3	230
URSC10	*		*	Quick Connect	1/12 - 1/2	115
URSC20	*		*	Quick Connect	1/12 - 1/2	230
URCO81	*	*	*	Quick Connect	1/12 - 1/5	115
URCO41	*	*	*	Quick Connect	1/4 - 1/3	115
URCO21	*	*	*	Quick Connect	1/2	115
URCO82	*	*	*	Quick Connect	1/12 - 1/5	230
URCO62	*	*	*	Quick Connect	1/6 - 1/5	230
URCO42	*	*	*	Quick Connect	1/4 - 1/3	230
URCO22	*	*	*	Quick Connect	1/2	230

* URO replaces all UR

Direct Replacement Solid State Relays, Overloads and Relay/Overload Combinations

- Direct Replacements for numerous OEM's
- Use OL Series Overloads with IC Series, PO Series and UR115



IC100



OL1

SUPCO NO.	RELAY	OVERLOAD	HORSEPOWER	VAC	# OF TERMINALS	COMPRESSOR CONNECTIONS	CAPATIBLE	CAPACITOR REPLACES OEM NO.
IC100	*	---	1/12 to 1/3	120	2	2	Yes	216594300, WR7X194, WR7X214, 4318083
IC102	*	---	1/12 to 1/3	120	3	2	Yes	5303007173, WR7X240, WR7X5142, 68857-1
		---	1/12 to 1/3	120	2	2	Yes	WR7X10011, WR7X190, WR7X195, WR7X259, 66858-1, 3204873
OL1	---	*	1/5 to 1/4	120/240	1	1	---	5303299560, 216100110
OL2	---	*	1/4 to 1/3+	120/240	1	1	---	5303270406, WR8X122
OL3	---	*	1/6 to 1/5	120/240	1	1	---	5303276514
OL4	---	*	1/4 to 1/3+	120/240	1	1	---	5303206885, 2154945

Relays, Overloads & Hard Starts

OV Series Universal Replacement Motor Protectors

Features

- Built in temperature activated disc opens and closes the motor overload protector's contacts.
- Excessive heat generated by the compressor, motor or crankcase heater will open the contacts to help protect the equipment from serious damage or burnout.
- UL and CSA Approved

Applications

- Used in heat pumps, air conditioners, motors, refrigerators, freezers, pumps, water coolers, and heating applications.



OVKIT

Overload Kit

- Contains one of each overload (10 total)



Horsepower at 120 Volts

SUPCO NO.	LOCKED ROTOR AMPS												GEM NO.	MARS NO.	
	12.0	13.5	1/20	1/1	1/10	1/8	1/6	1/5	1/4	1/3	1/2	3/4			
OV32	12.0	13.5	•	•										MP359	35004
OV34	14.0	15.5		•	•	•	•	•						MP358	35007
OV36	16.0	18.0			•	•	•	•						MP357	35009
OV38	18.5	22.0			•	•	•	•	•					MP354	35010
OV40	22.5	26.5					•	•	•					MP360	35011
OV42	27.0	31.0					•	•	•					MP355	35012
OV44	31.5	35.5								•	•			MP361	35017
OV46	36.0	40.0								•	•	•		MP352	35018
OV48	40.5	44.5									•	•	•	MP351	35019
OV50	45.0	49.0										•	•	MP362	35020

Horsepower at 240 Volts

SUPCO NO.	LOCKED ROTOR AMPS														GEM NO.	MARS NO.
	12.0	13.5	1/10	1/8	1/6	1/5	1/4	1/4+	1/3	1/3+	1/2	1/2+	3/4	1		
OV32	12.0	13.5	•	•	•	•	•	•	•						MP359	35004
OV34	14.0	15.5	•	•	•	•	•	•	•						MP358	35007
OV36	16.0	18.0				•	•	•	•	•					MP357	35009
OV38	18.5	22.0				•	•	•	•	•	•				MP354	35010
OV40	22.5	26.5						•	•	•	•	•	•	•	MP360	35011
OV42	27.0	31.0						•	•	•	•	•	•	•	MP355	35012
OV44	31.5	35.5										•	•	•	MP361	35017
OV46	36.0	40.0										•	•	•	MP352	35018
OV48	40.5	44.5										•	•	•	MP351	35019
OV50	45.0	49.0											•	•	MP362	35020

This application guide is offered as a guide only when no other information is available.

The application will vary with compressor manufacturer's systems and condenser applications (static, fan, and water cooled, etc.)

Other factors include refrigerant, motor type, and efficiency.

Application Note:

Locked Rotor Amperage Measurement.

To determine the locked rotor amperage use the following procedure:

1. Disconnect source of electrical supply.
2. By-pass defective overload with jumper.
3. Remove wire from start terminal of compressor.
4. Place hook-on ammeter on wire going to common or run terminal of compressor.
5. Connect plug to source of current and read ammeter.
6. If unit does not have a start capacitor, add 1/2 of ampere reading to obtain the locked rotor amps.
Example: If ampere reading is 21, add 1/2 (+ 7) = 28 locked rotor amps.
7. If unit has a start capacitor, add 10% of ampere reading. Example: If ampere reading is 21, add 10% (+2.1) = 23.1 locked rotor amps.
8. Replace defective overload and replace wire removed from start terminal.

NOTE: The above procedure should only be used when the motor winding is at ambient temperature.

Relays, Overloads & Hard Starts

Motor Protector Cross Reference

HP/Type	SUPCO OV	Tecumseh O/L
1/8 Fan	OV34	83281 / 83282
		83316 / 83438
		83441 / 83461
		83473 / 83606
		83628 / 83711
1/6 Fan	OV36	83018 / 83021
1/8 Static		83042 / 83077
		83091 / 83160
		83160-1 / 83165
		83165-1 / 83191
		8191-1 / 83287
		83463 / 83691
		83006

HP/Type	SUPCO OV	Tecumseh O/L
1/5 Fan	OV38	83030 / 83131
1/6 Static		83183 / 83183-1
		83290 / 83426
		83439 / 83448
		83743 / 83743-1
		83746 / 83746-1
83771		
1/5 Static	OV40	8300MRT58
1/4 Fan	OV42	83011 / 83139
		83161 / 83161-1
		83163 / 83163-1
		83259 / 83289
		83292 / 83323

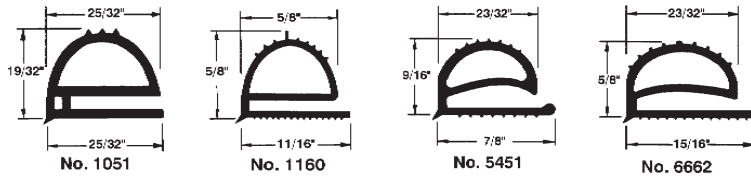
HP/Type	SUPCO OV	Tecumseh O/L
1/4 Static	OV44	83013 / 83017
		83036 / 83063
		83145-1 / 83172
		83172 / 83172-1
		83192 / 83192-1
		83321 / 83373
		83376-1 / 83378
		83400 / 83435
		83459 / 83647
		83681 / 83694
		83736-1 / 83766
		83376-1 / 83378
		83789

HP/Type	SUPCO OV	Tecumseh O/L
1/3 Fan	OV46	83031 / 83074
		83168 / 83168-1
		83257 / 83257-1
		83257-2 / 83293
		83307 / 83332
		83390 / 83413
		83413-1 / 83415
		83429 / 83430
		83453 / 83454
		83464 / 83498
		83498-1 / 83625
		83631 / 83637
		83640 / 83708
		83713 / 83714 / 83754
1/3 Static	OV48	8300MRT26
		8300MRT60
		83219
		83434
		83673

Door Gaskets

Refrigerator Universal Door Gaskets

Four of the most commonly used compression door gaskets. Available in 50 and 100 foot coils. All of the compression gaskets are made from refrigeration grade 100% virgin vinyl and is FDA acceptable. Gaskets 1051 and 1160 are excellent for curves with a 6 inch or larger radius; 5451 and 6662 are excellent for curves with a 2 inch or larger radius. All of the gaskets can be notched for tighter curves or corners.



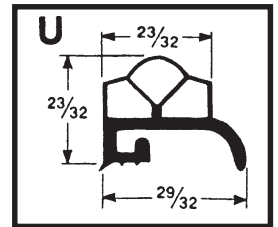
50 Foot Coil	100 Foot Coil	Color
1051-50	1051-100	White
1160-50	1160-100	White
	1160-100B	Light Blue
5451-50	5451-100	White
6662-50	6662-100	White

Four Piece Universal Door Gasket Kit

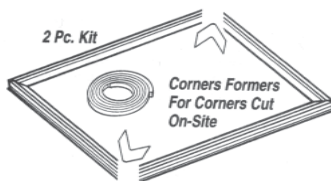
Universal replacement compression gasket kit, made to replace hundreds of older gaskets. Gasket made from refrigeration grade 100% virgin vinyl and is FDA acceptable. Ideal for older applications where a replacement gasket is no longer available. Preformed corners speed up the installation.



Supco No.	Color	Maximum Door Size
SGE517	White	67" X 67"



Two Piece Magnetic Universal Door Gaskets



Features

- Two profiles are available
- Quick installation, only two cuts required, corner kit included. Magnetic strip included.
- Refrigeration grade virgin vinyl (FDA acceptable)

Installation

- Only two cuts required for solvent welds, use original gasket as template
- Magnetic strips are cut to size and inserted into gasket sections, prior to solvent welding.
- Corner formers speed up installation by aligning the corners for the solvent weld.

Supco No.	Color	Maximum Door Size
SU2204	White	36" X 68"
SU2213	White	36" X 68"

