

Defrost Thermostats

Direct Replacement Defrost Thermostats



Style A



Style B



Style C



Style D



Style E



Style F



Style G

Electrolux							
Brand	Replaces: OEM No.	Exact Supco No.	Mounting Clip	Open °F	Close °F	Diff. °F	Style
Electrolux	5300460792	SL6792	Use Old Clip	75	25	50	F
	5303917625	SL2690	Around Tube	47	22	25	B
	5303917954	SL2691	3 Clip Kit	55	20	35	H
	5303917626	SL2691	3 Clip Kit	55	20	35	H
	5303917627	SL2691	3 Clip Kit	55	20	35	H
	5303917629	SL2691	3 Clip Kit	55	25	30	H
	F112205	SL2205	Side Tube Clip	50	10	40	D
F88366	SL8366	Snap on	60	20	40	E	

General Electric							
Brand	Replaces: OEM No.	Exact Supco No.	Mounting Clip	Open °F	Close °F	Diff. °F	Style
GE	WR49X430	SL5430	Side Tube Clip	130	120	10	D
	WR50X10010	SL10010	3/8" Tube	55	25	30	A
	WR50X112	SL50112	3/8" Tube	72	28	44	A
	WR50X122	SL50122	3/8" Tube	60	28	32	A
	WR50X124	SL50124	1/2" Tube	72	28	44	A
	WR50X129	SL50129	3/8" Tube	50	20	30	A
	WR50X134	SL50134	1/2" Tube	63	23	40	A

Maytag							
Brand	Replaces: OEM No.	Exact Supco No.	Mounting Clip	Open °F	Close °F	Diff. °F	Style
Maytag	10442411	SL2691	3 Clip Kit	55	20	35	H
	10544002	SL2690	Around Tube	47	22	25	B
	52085-1	SL8513	Snap on	45	25	20	E
	52085-10	SL8510	Snap on	40	10	30	E
	52085-11	SL8515	Snap on	55	15	40	E
	52085-12	SL8366	Snap on	60	20	40	E
	52085-13	SL8513	Snap on	45	25	20	E
	52085-15	SL8515	Snap on	55	15	40	E
	52085-17	SL8517	Side Tube Clip	80	15	65	D
	52085-19	SL8519	Side Tube Clip	80	31	49	D
	52085-2	SL8513	Snap on	45	25	20	E
	52085-20	SL8509	Snap on	40	15	25	E
	52085-28	SL8528	Snap on	47	15	32	E
	52085-29	SL8513	Snap on	45	25	20	E
	52085-3	SL8515	Snap on	55	15	40	E
	52085-30	SL8517	Side Tube Clip	80	15	65	D
	52085-5	SL8509	Snap on	40	15	25	E
	52085-6	SL8515	Snap on	55	15	40	E
	52085-9	SL8509	Snap on	40	15	25	E
	60413-4	SL8517	Side Tube Clip	80	15	65	D
	C3686602	SL8366	Snap on	60	20	40	E
	C3686604	SL8366	Snap on	60	20	40	E
	C8765001	SL50134	1/2" Tube	63	23	40	A
	C8765002	SL10010	3/8" Tube	55	25	30	A
	C8770402	SL8513	Snap on	45	25	20	E
	C8871201	SL2691	3 Clip Kit	55	20	35	H
	C8871201	SL2691	3 Clip Kit	55	20	35	H
	C8898603	SL2691	3 Clip Kit	55	20	35	H
	C8972003	SL2690	Around Tube	47	22	25	B
	C8972006	SL2690	Around Tube	47	22	25	B
	C8972006	SLT45	Side Tube Clip	45	22	23	D
	R0161086	SL2690	Around Tube	47	22	25	B

Defrost Thermostats

Direct Replacement Defrost Thermostats



Style H
Includes: SL243, SL245,
and SL247

Whirlpool							
Brand	Replaces: OEM No.	Exact Supco No.	Mounting Clip	Open °F	Close °F	Diff. °F	Style
Whirlpool	482290	SL2697	Side Push On	70	12	58	C
	2196155	SL6155	3/8" Tube	45	15	30	A
	4387489	SL3084	Use Old Clip	50	25	25	G
	4387490	SL7490	5/16" Tube	48	18	30	A
	4387500	SL7500	3/8" Tube	72	28	44	A
	4387503	SL7503	5/16" Tube	44	18	26	A

Commercial Refrigeration Defrost Thermostats Exact Replacement



SL5708

Brand	Replaces: OEM No.	Exact Supco No.	Mounting Clip	Open °F	Close °F	Diff. °F	Switching
Bohn	4725C	SL5708	Flush Mount	75	40	35	SPST
	4751C	SL5709	Flush Mount	55	35	20	SPDT
Russell	103079002	SL79002	Around Tube	55	30	25	SPST
	103079005	SL79005	Flush Mount	65	30	35	SPDT



SL5709



SL79002



SL79005

Humidifier Defrost/Freeze Protection Thermostat



SFPC

Brand	Replaces: OEM No.	Exact Supco No.	Mounting Clip	Open °F	Close °F	Diff. °F	Switching
Amana	R0161056	SFPC	Up to 7/8" Tube	35	50	15	SPST
Electrolux	5303304035	SFPC	Up to 7/8" Tube	35	50	15	SPST
	5303279149	SFPC	Up to 7/8" Tube	35	50	15	SPST
	5303323233	SFPC	Up to 7/8" Tube	35	50	15	SPST
	5304402782	SFPC	Up to 7/8" Tube	35	50	15	SPST
Trol A Temp	FPC	SFPC	Up to 7/8" Tube	35	50	15	SPST

Often used as a Universal Freeze Protection Thermostat.

Defrost Thermostats Cross Reference

Electrolux		Electrolux (Cont)		Electrolux (Cont)		Electrolux (Cont)		General Electric (Cont)	
OEM No.	Supco No.	OEM No.	Supco No.	OEM No.	Supco No.	OEM No.	Supco No.	OEM No.	Supco No.
00620901	SL50	5300460793	SL60	5604-18-6	SL60	G162690	SL2690	WR50X101	SL60
00621008	SL50	5300629464	SL50	5604-19-2	SL5844	G162690-01	SL2690	WR50X102	SL55
00622609	SL50	5301228589	SL50	5604-20-3	SL45	G162690-01	SL2691	WR50X103	SL55
00627316	SL50	5301230220	SL60	5604-23-1	SL45	G162697-01	SL2690	WR50X105	SL45
00627878	SL50	5303007540	SL2690	5604-23-2	SL45	G162697-01	SL2691	WR50X107	SL60
00628046	SL50	5303015195	SL2691	5604-23-4	SL45	G166153	SL2690	WR50X109	SL45
00629464	SL50	5303015865	SL55	5604-23-5	SL2690	G166157	SL2690	WR50X11	SL60
01135288	SL50	5303202296	SL50	86498	SL2690	G185196	SL2690	WR50X110	SL60
01136916	SL50	5303209818	SL55	C000048426	SL60	G189055-01	SL2690	WR50X111	SL60
06540457	SL50	5303211289	SL2691	C000048430	SL60	G191652	SL2690	WR50X115	SL60
06565294	SL50	5303211396	SL2690	C000048432	SL60	K1167822	SL50	WR50X117	SL55
06582737	SL50	5303279149	SL2691	C000048621	SL60	K1227771	SL50	WR50X119	SL50129
06585546	SL50	5303279266	SL2691	C000048623	SL60	K1228589	SL50	WR50X12	SL50
06595156	SL50	5303283296	SL2690	C000048625	SL60	K1229270	SL60	WR50X122	SL50122
06595294	SL50	5303300820	SL2690	C000048727	SL60	K1229271	SL60	WR50X125	SL60
06595363	SL50	5303300829	SL2691	C000048729	SL60	K1230220	SL60	WR50X127	SL50129
06599538	SL2690	5303300840	SL2691	C000048731	SL60	K1231024	SL60	WR50X128	SL50122
07511940	SL50	5303300853	SL2691	C000074249	SL60	K1231538	SL60	WR50X129	SL50129
07512366	SL50	5303308266	SL2691	C000074389	SL60	K1231624	SL60	WR50X13	SL50
07513645	SL50	5303308291	SL2691	C000289135	SL60	K1231688	SL60	WR50X14	SL50
07516267	SL50	5303309908	SL50	C000289245	SL60	R000900749	SL2690	WR50X15	SL50
07516378	SL50	5303309910	SL55	C000289247	SL60	W2656D44H04	SL50	WR50X16	SL45
07516659	SL50	5303309911	SL60	C000289249	SL60	W2656D44H09	SL50	WR50X17	SL60
07546170	SL50	5303311375	SL45	C000289313	SL60	A000254401	SL70	WR50X18	SL50
08000073	SL2690	5303311376	SL70	C000289315	SL60	A000269903	SL70	WR50X19	SL5022
08003827	SL50	5303912558	SL50	C000289316	SL60	A000286103	SL70	WR50X20	SL50
08011166	SL2690	5303917626	SL2690	C000289317	SL60	C000048728	SL6792	WR50X21	SL60
08014146	SL2691	5303917627	SL2690	C000289318	SL60	C000289135	SL60	WR50X22	SL5022
08017563	SL2690	5303917628	SL50	C000289321	SL60	C000289239	SL6792	WR50X23	SL60
1135288	SL55	5303917629	SL55	C000289323	SL60	C000289241	SL6792	WR50X24	SL50
1135693	SL90	5303917630	SL60	C000289318	SL60	C000289243	SL6792	WR50X25	SL45
116136	SL50	5303917954	SL2691	C000460792	SL60	C000289247	SL60	WR50X26	SL60
116139	SL50	5304413855	SL45	C000460793	SL60	C000289249	SL60	WR50X27	SL60
187C144H01	SL70	5304413856	SL70	C008871201	SL2690	C000289317	SL60	WR50X28	SL55
218876901	SL2690	5304415914	SL45	C008871202	SL2690	C000289318	SL60	WR50X30	SL55
218916201	SL2690	5304415915	SL55	C008871203	SL2690	C000289319	SL6792	WR50X31	SL55
2564D44H05	SL6792	5304415916	SL50	C3686602	SL60	C000293907	SL70	WR50X32	SL55
2655D44H04	SL6792	5304415917	SL60	C8731901	SL60	C000293911	SL70	WR50X34	SL50
2656D44H02	SL60	5304415918	SL70	C8736601	SL90	C000294635	SL70	WR50X35	SL55
2656D44H03	SL60	5316269001	SL2690	C8871201	SL55	C000298318	SL60	WR50X36	SL60
2656D44H04	SL60	5604-14-1	SL45	C8972003	SL10010	C000460792	SL60	WR50X37	SL55
2656D44H05	SL60	5604-14-2	SL60	E000707807	SFPC	C00048623	SL60	WR50X4	SL50
2656D44H09	SL50	5604-14-37	SL60	E000707809	SFPC	C00048727	SL60	WR50X45	SL45
3001363	SL2690	5604-14-4	SL45	E000707810	SFPC	C00048729	SL60	WR50X5	SL60
3007540	SL2690	5604-14-5	SL45	E000707811	SFPC	W2656D44H02	SL6792	WR50X50	SL50
3015075	SL2690	5604-14-6	SL60	F000112205	SL2690	W2656D44H03	SL6792	WR50X5001	SL50
3015195	SL2691	5604-14-7	SL60	F112205	SL2690	W2656D44H05	SL6792	WR50X5003	SL45
3015865	SL55	5604-14-8	SL60	F128154	SL2690	WC460792	SL6792	WR50X5007	SL45
3016814	SL2690	5604-15-1	SL45	F87333	SL50	General Electric		WR50X5009	SL60
3202296	SL50	5604-17-1	SL45	F88366	SL60	OEM No.	Supco No.	WR50X5013	SL60
3204985	SL2690	5604-17-2	SL60	G158067	SL2690	WR23X5030	SL60	WR50X5014	SL45
3206322	SL6322	5604-18-2	SL60	G158068	SL2690	WR49X211	SL50	WR50X5015	SL55
5300286103	SL70	5604-18-4	SL45	G158749	SL2690	WR49X430	SL5430	WR50X5016	SL45
5300460792	SL6792	5604-18-5	SL45	G158750	SL2690	WR50X10	SL60	WR50X5018	SL45

Defrost Thermostats Cross Reference

General Electric (Cont)		Gemline (Cont)		Maytag (Cont)		Maytag (Cont)		Therm-O-Disc (Cont)	
OEM No.	Supco No.	OEM No.	Supco No.	OEM No.	Supco No.	OEM No.	Supco No.	OEM No.	Supco No.
WR50X5019	SL60	GL60	SL60	12017804	SL50	B5638001	SL60	37T2143206	SL90
WR50X5020	SL45	GL6792	SL6792	12017806	SL50	B5645401	SL90	37T2143266	SL55
WR50X5021	SL50	GL70	SL70	12017816	SL50	B56454-1	SL90	37T3129134	SLT55
WR50X5022	SL55	GL80	SL80	12017823	SL50	B5666201	SL50	37T3129312	SLT55
WR50X5023	SL45	GL8366	SL8366	26230-2	SL55	B5681001	SL60	37T312967	SLT55
WR50X5024	SL45	GL8509	SL8509	26230-3	SL55	B56810-1	SL60	37TV31611462	SL2641
WR50X5025	SL60	GL8510	SL8510	26230-9	SL45	B5688901	SL90	Whirlpool	
WR50X5026	SL60	GL8513	SL8513	26289-1	SL60	B56889-1	SL90	OEM No.	Supco No.
WR50X5027	SL60	GL8515	SL8515	27268-1	SL60	B5752501	SL90	1100435	SL3084
WR50X5028	SL50	GL8517	SL8517	27791-1	SL60	B57525-1	SL90	1100436	SL3084
WR50X5029	SL45	GL8519	SL8519	27791-2	SL60	B5860-1	SL60	1103841	SL2697
WR50X5030	SL45	GL8528	SL8528	27791-4	SL60	C3686601	SL60	1103842	SL2697
WR50X5031	SL45	GL90	SL90	27791-5	SL70	C3686604	SL60	1106890	SL2697
WR50X5032	SL50	GLT45	SLT45	27791-6	SL60	C36866601	SL60	1108164	SL3084
WR50X5033	SL5022	GLT50	SLT50	27791-7	SL60	C36866602	SL60	1108165	SL3084
WR50X5034	SL55	GLT55	SLT55	27791-8	SL70	C36866604	SL60	1108182	SL2697
WR50X5041	SL50	GLT60	SLT60	520825-13	SL45	C8731902	SL70	1108199	SL3084
WR50X55	SL55	GLT70	SLT70	52085-1	SL55	C8731903	SL90	1108574	SL3084
WR50X6	SL45	GLT80	SLT80	52085-10	SL45	C8736601	SL90	1108575	SL3084
WR50X60	SL60	Klixon		52085-11	SL55	C8736602	SL55	1110545	SL3084
WR50X65	SL60	OEM No.	Supco No.	52085-12	SL60	C8736603	SL55	1110546	SL3084
WR50X66	SL50	20640IL60	SL5844	52085-13	SL45	C8765001	SL50134	1110762	SL3084
WR50X68	SL50	20640L44510-842	SLT55	52085-15	SL55	C8765002	SLT55	1110763	SL3084
WR50X7	SL60	20640L44510-860	SLT55	52085-17	SL80	C8770402	SL45	1113044	SL3084
WR50X70	SL50	20641L1137-596	SL5022	52085-19	SL8519	C8871201	SL55	1113405	SL3084
WR50X73	SL55	2NT01L0959	SLT55	52085-2	SL55	C8898601	SLT55	1115192	SL7500
WR50X74	SL55	Mars		52085-20	SL60	C8898603	SLT55	1115193	SL7500
WR50X75	SL55	OEM No.	Supco No.	52085-22	SL8528	C8972002	SL10010	1115456	SL3084
WR50X76	SL60	33008	SL45	52085-24	SL8528	C8972006	SL10010	1115457	SL3084
WR50X77	SL60	33009	SL50	52085-25	SL8528	C8972009	SL50	1118688	SL3084
WR50X83	SL90	33010	SL55	52085-28	SL8528	C8978401	SLT55	1118690	SL3084
WR50X88	SL90	33011	SL60	52085-3	SL55	C8978402	SLT55	1118691	SL3084
WR50X89	SL60	33012	SL70	52085-33	SL8528	R0157343	SL60	1118824	SL3084
WR50X9	SL5022	33013	SL243	52085-4	SL60	R0161012	SLT55	1118825	SL7500
WR50X90	SL55	33014	SL245	52085-5	SL45	R0161018	SL5844	1118826	SL3084
WR50X91	SL60	33015	SL247	520856	SL60	R0161023	SL5844	1121294	SL7500
WR50X92	SL55	33020	SL80	52085-6	SL55	R0161036	SL5844	1121295	SL7500
WR50X93	SL60	33021	SL90	520857	SL60	R0161060	SL7985	1127661	SL3084
Gemline		33031	SL5844	52085-7	SL60	R0161087	SL50	1127753	SL3084
OEM No.	Supco No.	33035	SL5022	52085-9	SL45	R0161088	SL50	1127754	SL3084
GL243	SL243	Maytag		55024-3	SL243	Sub-Zero		1127771	SL3084
GL245	SL245	OEM No.	Supco No.	55024-5	SL245	OEM No.	Supco No.	1127805	SL7500
GL247	SL247	0054156	SL90	55024-7	SL247	627180	SL5844	1127867	SL7500
GL249	SL249	0054160	SLT55	625844	SL5844	627985	SL7985	1127868	SL7500
GL2690	SL2690	0055501	SL10010	627051	SL5844	Therm-O-Disc		2000528	SL3084
GL2697	SL2697	0311729	SL5844	627180	SL5844	OEM No.	Supco No.	2149641	SL7503
GL3084	SL3084	0312471	SL10010	95092-1	SL7985	37T2129009	SL90	2149643	SL7503
GL45	SL45	10442402	SLT55	B5569-7	SL60	37T2129011	SL90	2149849	SL6155
GL50	SL50	10442407	SLT55	B5611401	SL60	37T2129022	SL60	2151215	SL3084
GL5022	SL5022	10442411	SLT55	B56114016	SL60	37T2129023	SL60	2154544	SL3084
GL55	SL55	10544001	SL50	B5630006	SL60	37T2129024	SL90	2161331	SL6155
GL5708	SL5708	10544003	SL50	B563006	SL60	37T2129025	SL70	2163894	SL7503
GL5709	SL5709	10544005	SL50	B5636401	SL50	37T2129026	SL60	2172694	SL7503
GL5844	SL5844	12017802	SL50	B5636404	SL50	37T2129049	SL90	2176066	SL6155

Defrost Thermostats Cross Reference

Whirlpool (Cont)		Whirlpool (Cont)		Whirlpool (Cont)		Whirlpool (Cont)	
OEM No.	Supco No.	OEM No.	Supco No.	OEM No.	Supco No.	OEM No.	Supco No.
2176941	SL7490	531668	SL2697	549701	SL2697	989319	SL2697
2182380	SL7503	531669	SL2697	549757	SL2697	989320	SL2697
2183072	SL7503	531676	SL2697	549758	SL2697	989553	SL2697
2183073	SL7490	531678	SL2697	549928	SL2697	989578	SL2697
2196155	SL6155	531679	SL2697	549929	SL2697	989579	SL2697
2221677	SL7503	531680	SL2697	625844	SL5844	989588	SL2697
4343917	SL7503	531688	SL70	627051	SL5844	989589	SL2697
4356928	SL8513	531689	SL2697	627180	SL5844	989624	SL2697
4387489	SL2697	531690	SL2697	627808	SL7985	989625	SL2697
4387490	SL7490	531769	SL70	627984	SL7985	989626	SL2697
4387498	SL6155	531813	SL2697	627985	SL7985	989685	SL2697
4387499	SL3084	531814	SL2697	628209	SL7985		
4387500	SL7500	531831	SL70	628397	SL7985		
4387501	SL8513	53435	SL70	831383	SL90		
4387503	SL7503	547048	SL2697	833958	SL2697		
480478	SL2697	547069	SL2697	850115	SL2697		
480594	SL2697	547088	SL2697	850116	SL2697		
480595	SL2697	547089	SL2697	850117	SL2697		
480851	SL2697	547090	SL2697	850118	SL2697		
481227	SL2697	547091	SL2697	850119	SL2697		
482290	SL2697	547295	SL2697	850120	SL2697		
482697	SL2697	547296	SL2697	850121	SL2697		
483006	SL2697	547323	SL2697	850122	SL2697		
483007	SL2697	547454	SL2697	850341	SL2697		
483084	SL3084	547455	SL2697	850342	SL2697		
513315	SL2697	547853	SL2697	850607	SL2697		
513548	SL2697	547854	SL2697	850669	SL2697		
513574	SL2697	547855	SL2697	851022	SL2697		
513989	SL2697	547856	SL2697	851368	SL2697		
513990	SL2697	547857	SL2697	851390	SL2697		
515246	SL2697	547858	SL2697	851397	SL2697		
515315	SL2697	547859	SL2697	851674	SL2697		
530215	SL2697	547860	SL2697	851675	SL2697		
530216	SL2697	547861	SL2697	851890	SL2697		
530217	SL2697	547862	SL2697	851891	SL2697		
530253	SL2697	548463	SL2697	867035	SL90		
530254	SL2697	548464	SL2697	934390	SL2697		
530317	SL2697	548712	SL2697	934391	SL2697		
530318	SL2697	548713	SL2697	934424	SL2697		
530327	SL2697	548886	SL2697	934425	SL2697		
530328	SL2697	548887	SL2697	934426	SL2697		
530435	SL2697	548888	SL2697	934427	SL2697		
530668	SL70	548889	SL2697	934468	SL2697		
530679	SL70	548890	SL2697	934469	SL2697		
5308011166	SL2690	548891	SL2697	936139	SL2697		
5308871201	SL2690	548892	SL2697	936140	SL2697		
5308871202	SL2690	548893	SL2697	937071	SL2697		
5308871203	SL2690	548894	SL2697	937072	SL2697		
530990	SL2697	548895	SL2697	937303	SL2697		
531068	SL2697	548896	SL2697	937304	SL2697		
531069	SL2697	549698	SL2697	942871	SL3084		
531479	SL2697	549699	SL2697	942872	SL3084		
531480	SL2697	549700	SL2697	9791823	SL7490		

Refrigeration Replacement Parts

GE - Shelf supports are symmetric - use on left or right side



SP7232

OEM Part No.	SUPCO Part No.	Color	Dimensions	Replaces	Pack
WR2X7232	SP7232	Off White	1 3/4" W X 2" H bar	GE WR2X7232, WR2X7232R	2
WR2X7233	SP7233	Off White	1" W X 2" H bar	GE WR2X7233, WR2X7233R	2
WR2X8345	SP8345	White	1 1/2" W for 2" H bar	GE WR2X8345, WR2X7617	2
WR2X9144	SP9144	White	3/4" W for 2" H bar	GE WR2X9144, WR2X8776	2

Whirlpool - Shelf supports are symmetric - use on left or right side



SP695



SP696

OEM Part No.	SUPCO Part No.	Color	Dimensions	Replaces	Pack
839904	SP695	White	For 1 3/8" bar	Whirlpool 655657, 655143, 655450, 943125, 982123, Inglis 01839904	2
839975	SP696	White	For 3/4" bar	Whirlpool 655658, 655451, 655177, 943127, 982122, 839975D, Inglis 01839975	2
912361	SP698	White	For 1 3/8" bar	Whirlpool / Inglis 912361	2
912583	SP699	Almond	For 1 3/8" bar	Whirlpool / Inglis 912583	2
4318297	SP697	White	For 3" bar	Whirlpool 1106861, 1124343, 2148026	2

Universal Cam Risers for GE, Whirlpool, & others.



DR001

OEM Part No.	SUPCO Part No.	Description	Color	Dimensions	Replaces	Pack
WR2X4901	DR001	Cam Riser	Black	3/4" X 1 1/4"	GE WR2X4901, WR2X7512, Whirlpool 4318165 replaces most door cams, black for colors.	2

Crisper Shelf for Newer Style General Electric - Roper - Sears

Designed as a direct replacement for WR32X10398 Crisper Cover. Replaces older style cover WR32X1094, WR32X1107, and WR32X1122. The Crisper Shelf is opaque white plastic, double wide (24 1/2" wide X 18 5/8" deep) shelf. The newer design is stronger than the older WR32X1094 style crisper shelf. Cover has molded in glides for two half-width pans or one full-width pan.

CS10398



OEM No.	Supco No.	Description	Color	Dimension	Replaces	Packaged
WR32X10398	CS10398	Crisper Shelf	Opaque - White	24 1/2" X 18 5/8"	WR32X1094 WR32X1107 WR32X1122	1 or 6

AC Hard Starts

A/C Hard Starts

Choosing the correct hard start for the application combines a technical need with a professional preference. Select from the broadest offering of hard starts from the Pioneer of Hard Start technology.

Three (3) styles to choose from:

- **SPP Series** PTC/Capacitor combination
- **SPPE Elite Series** Electronic Potential Relay (EPR)/Capacitor combination
- **SK3W Series** 3-wire Potential Relay/Capacitor combination

Applications

- Use on any single phase air conditioner or refrigeration unit
- Low voltage situations
- Hard starting compressors



SPP Series PTC/ Capacitor Combination

Features/Benefits

- Positive Temperature Coefficient Technology (PTC)
- Field proven reliability
- Easy 2-wire installation
- Most economic



PART NO.	OPERATING VOLTAGE (VAC)	RECOMMENDED RANGE (hp)	INCREASE IN TORQUE (%)
SPP*	90 – 277	½ to 10	250%
SPP5	90 – 277	½ to 10	300%
SPP6	90 – 277	½ to 10	500%
SPP7S	90 – 277	½ to 10	600%

* This model does not include a capacitor



SPPE 'E Class' Series EPR/Capacitor Combination

Features/Benefits

- Electronic Potential Relay Technology (EPR)
- Backup electronic timing circuit to protect the compressor
- Voltage sensing
- Instant re-start
- Easy 2-wire installation
- Can be used on PSC and CSIR type compressors



PART NO.	OPERATING VOLTAGE (VAC)	RECOMMENDED RANGE (hp)	CAPACITOR Size (uF)
SPP4E	90 – 130	1/8 – 1	88–106
SPP5E	90 – 277	1/3 – 2	43–52
SPP6E	90 – 277	1/2 – 3	88–106
SPP7E	90 – 277	1 – 4	130–156
SPP8E	90 – 277	1 and up	189–227
SPP9E	90 – 277	1 and up	233–280
SPP10E	90 – 277	3 and up	270–324 / 330V



SK3W Series 3-wire Potential Relay/Capacitor Combination

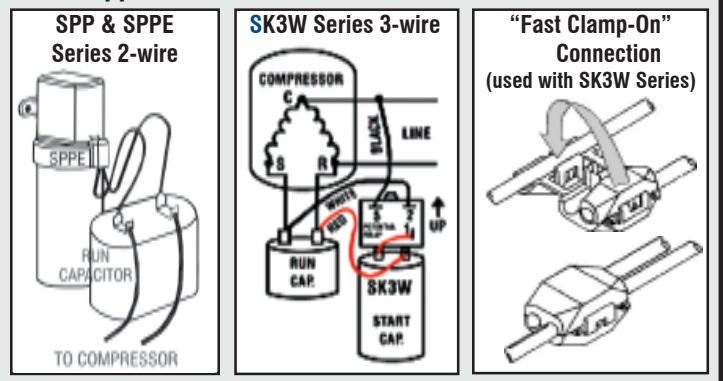
Features/Benefits

- OEM-Style 3-wire Installation
- Instant re-start
- Easy installation with “fast clamp-on” connection
- Models for standard and scroll compressors
- 330 VAC Start Capacity Voltage

PART NO.	H.P. RATINGS	COMPRESSOR	DROP-OUT VOLTAGE (VAC)	PICK-UP VOLTAGE (VAC)	MAXIMUM COIL VOLTAGE	START CAP (mF)
SK3W2	1 thru. 2 HP	Standard	60-135	204-233	500 VAC	88 - 108
SK3W3	2½ thru. 3 ½ HP	Standard	60-121	171-184	420 VAC	189 - 227
SK3W5	4 thru. 5 HP	Standard	60-121	171-184	420 VAC	243 - 292
SK3W4S	3 thru. 4 HP	Scroll	60-135	204-233	500 VAC	189 - 227
SK3W6S	4½ thru. 6 HP	Scroll	60-121	171-184	420 VAC	270 - 324

Hard Start Comparison	SPPE Series	SPP Series	SK3W Series
Start Sensing Technology	Voltage	N/A	Voltage
Uses Electronic Potential Relay (EPR)	Yes	No	Yes
Instant Re-Start	Yes	No	Yes
Senses Motor Start	Yes	No	Yes
Two wire, non-polarized	Yes	Yes	No
OEM Style, 3-wire	No	No	Yes
Replaces 3-wire capacitor kit	Yes	Yes	Yes
UL approved	Yes	Yes	Pending
PTCR Device	No	Yes	No
Backup Timing Safety Circuit	Yes	No	No
Potentially damaging to motor windings	No	No	No
Requires non-replaceable fuse protection	No	No	No

Application Note: 2-wire vs. 3-wire Installation



Relays

Universal Potential Relays

Note: See Technical Area for Application Note on Relays

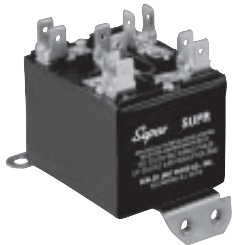
Replacing all potential relays, these WIRE TO WIRE Universal Potential Relays offer the ultimate in convenience. One potential relay to fit any application. Choose to “drop in” the SUPR Universal Potential Relay or “dial in” the exact pick-up voltage for the APR5 Adjustable Potential Relay. State of the Art electronic circuitry provides Wire to Wire replacement of any potential relay with added motor protection.

Features/Benefits

- Reduces inventory
- Wire to Wire Replacement for virtually ALL potential relays.
- Recycles instantly
- Accomodates screw-on or push-on connections.
- Dimensions identical to industry standard potential relays.
- Easy replacement mounting with universal mounting bracket.
- Start winding protection if motor does not start.
- Prevents start capacitor venting when motor doesn't start.

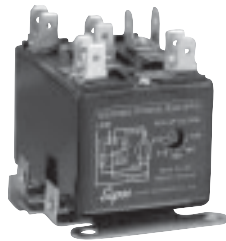
Applications

- Replaces all OEM potential relays
- Used on any single phase motor or air conditioning and refrigeration compressor up to 5 hp.



SUPR Universal Potential Relay

- Time Function Relay
- Start Time: 1.0 - 0.5 seconds



APR5 Adjustable Potential Relay

- Adjustable, Voltage Sensitive Relay
- Set pick-up voltage
- Safety time out 1.0 – 1.5 seconds



Common Specifications

Operating Voltage	110 – 270 VAC, Single Phase
Amperage	30 AMP
Motor Power Rating	up to 5 hp
Operating Position	Non-positional mounting.
Universal Mounting Bracket	Allows for easy installation. Unused portions of the bracket simply snap off with pliers.
Terminals	Screw or push-on. Adapters to convert screw-on to push-on are provided.
Dimensions	1.75W x 2.25L x 1.50H

90X Series Potential Relays

- Meets all requirements of OEM relays
- Universal break-off bracket



Features/Benefits

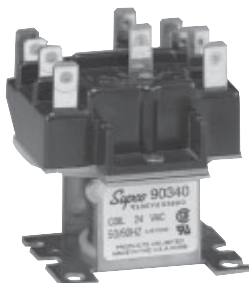
- 50/60 cycle
- Contact rating 35 amp @ 277 VAC
- Non-positional
- Instructions and wiring diagram included in each relay



PART NO.	CONTINUOUS COIL VOLTAGE	PICK-UP MIN.	PICK-UP MAX.	DROP MAX.	OUT REPLACES GE 3ARR3 RELAY GROUPS*
9063	170	139	153	55	2J; 2K; 2L; 2M; 5N; 7J; 7K; 7L; 7M; 7N; 8L; 8M; 8N
9064	395	260	275	120	3A; 3B; 3AV; 3AU; 4A; 4B; 6A; 6B; 6AV; 10A; 10B; 10AU; 10AV; 14A; 14B; 16A
9065	332	168	182	90	3P; 3R; 3AP; 5P; 5R; 5S; 5T; 13P; 19N; 22S
9066	395	215	225	120	3U; 3V; 3AT; 6U; 6V; 6W; 16U
9067	420	295	315	125	3C; 3D; 3AA; 4C; 4D; 4BK; 6C; 6D; 6AA; 10C; 10D; 26A; 26B; 26C; 26D
9068	502	325	345	135	3E; 3F; 3AB; 3AC; 4E; 4F; 4G; 6E; 6F; 6G; 10H; 10AB; 10AC; 26E; 26F; 26G; 26H; 27E; 27F; 27G
9069	336	180	195	105	3S; 3T; 10S; 10T; 10AS; 13S; 13T; 20S; 25S; 25T
9070	253	285	305	77	5B; 5C; 5D; 5AA; 8B; 8C; 8D; 27A; 27B; 27C
9071	420	212	232	121	6TV; 6TW; 10V; 16TV; 20V

903X Series General Purpose Switching Relays

Double pole – double throw (DPDT)



Applications

- HVAC/ R
- Appliance vending machines
- Fan controls
- Business machines



PART NO.	COIL VOLTAGE	TERMINAL 1-2-3	TERMINAL 4-5-6	CROSS REFERENCE	
				ESSEX/RBM	HONEYWELL
90340	24	power	power	90-340	R8222D1014
90341	110/12	power	power	90-341	R4222D1013
90342	208/240	power	power	90-342	R4222N1021

CONTACT RATINGS	POWER 208/240V		PILOT 208/240V	
	120V	277V	120V	277V
Full Load Amps	12	6	-	-
Resistive Amps*	15	15	3	3
Locked Rotor Amps	60	35	-	-
Horsepower	3/4	3/4	1/10	1/10

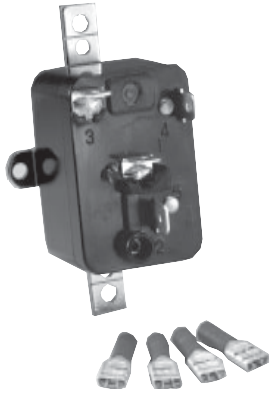
*0.75 power factor

Relays

902XX & 903XX Series General Purpose Fan Relays

Engineering Data

- **CONTACTS:** SPST-NO, SPST-NC, SPDT, 1 NO/1 NC, Material/Power - Silver Alloy, Material 1/2 Pilot - Fine Silver
- **POWER RATINGS (All Forms):** 125 VAC, 18A Resistive, 12 FLA, 60 LRA, 240/277 VAC, 18A Resistive, 8 FLA, 48 LRA
- **SPECIAL POWER RATINGS (Form 1 & 2):** 125 VAC, 14 FLA, 84 LRA, 277 VAC, 25A Resistive
- **PILOT RATINGS (All Forms):** 3A, 277 VAC Gen. Purpose, 250 VA @ 250 VAC, 277 VA @ 277 VAC, 125 VA @ 125 VAC
- **COILS :** Voltage Ratings - 24, 120, 208/240, 77 VAC, 12, 24 VAC Frequency - 50/60 Hz Pick-up Voltage - AC 85% of nominal, DC 75% of nominal, Power Ratings -AC DC, Inrush 5 VA 3VA, Sealed 3 VA 3 VA



PART NO.	DESCRIPTION	AMPS	COIL VOLTAGE
90290	SPST	4	24V
90291	SPST	4	120V
90292	SPST	4	240V
90293	SPDT	1	24V
90294	SPDT	1	120V
90295	SPDT	1	240V
90370	SPDT	12	24V
90372	SPDT	12	120V
90374	SPDT	12	240V
90380	IN/NC	13	24V
90382	IN/NC	13	120V
90384	IN/NC	13	240V

Short Cycle Protector, Time Delay Relay and Contactor Combination

- Choose Delay on Break or Delay on Make model
- Ideal for split systems not supplied with contactor or time delay relay
- Prevents short cycling
- Contactor takes compressor load off the thermostat circuit

Features/Benefits

- Adjustable Delay
- Relay coil same voltage as load
- 1/4" male quick connect terminals
- Encapsulated circuitry
- Input Voltage: 208 - 230 VAC
- Maximum Amps: 30 A



PART NO.	DELAY TYPE	DELAY RANGE
TDP269	Delay on Make (DOM)	6 sec. to 300 sec.
TDC22	Delay on Break (DOB)	1 sec to 350 sec.

Compressor Protection Package Combination

Combines Hard Start Kit with maximum compressor protection.

Features/Benefits

- Can be installed in pilot circuits for 24 to 288 VAC
- Adjustable time delay from 6 seconds to 5 minutes
- Operates with or without cooling thermostat anticipator
- Only two terminal connection on Time Delay
- Can be mounted as an assembly or snapped apart for separate mounting
- Two models available to suit specific requirements

Applications

- Residential and commercial PSC A/C units and heat pumps
- For all PSC A/C units from 1 H.P. to 10 H.P.
- Can be used on 115 thru 288 VAC units
- For severe low voltage or hard starting compressors



PART NO.	INCREASED TORQUE	TIME DELAY RANGE
SPP5TD	270 ounce inches (300%)	6 sec. to 5 minutes
SPP6TD	390 ounce inches (500%)	6 sec. to 5 minutes

Capacitors



Motor Run Capacitors

Features:

- Non – PCB biodegradable synthetic oil
- Physical interrupter for safety
- Operating temperature –13°F to + 185°F (- 25°C to + 85°C)
- Microfarad μF tolerance +/- 5 %
- Drawn steel case construction
- Quad blade quick connect terminals
- Hermetically sealed

Applications:

- Air Conditioning Compressors
- Refrigeration Compressors
- Furnace Blower Motors

RUN CAPACITORS

PART NUMBER	VALUE (μF)	370 VAC	440 VAC	SINGLE	DUAL	OVAL	ROUND	PART NUMBER	VALUE (μF)	370 VAC	440 VAC	SINGLE	DUAL	OVAL	ROUND	PART NUMBER	VALUE (μF)	370 VAC	440 VAC	SINGLE	DUAL	OVAL	ROUND
CR2X370	2	X		X		X		CR40X370R	40	X		X			X	CD35+7.5X440	35+7.5	X		X	X		
CR3X370	3	X		X		X		CR45X370R	45	X		X			X	CD40+5X440	40+5	X		X	X		
CR4X370	4	X		X		X		CR50X370R	50	X		X			X	CD40+7.5X440	40+7.5	X		X	X		
CR5X370	5	X		X		X		CR55X370R	55	X		X			X	CD45+5X440	45+5	X		X	X		
CR6X370	6	X		X		X		CR60X370R	60	X		X			X	CD45+7.5X440	45+7.5	X		X	X		
CR7.5X370	7.5	X		X		X		CR70X370R	70	X		X			X	CD55+10X440	55+10	X		X	X		
CR10X370	10	X		X		X		CR80X370R	80	X		X			X	CR10X440R	10	X	X				X
CR12.5X370	12.5	X		X		X		CD20+5X370R	20+5	X			X		X	CR15X440R	15	X	X				X
CR15X370	15	X		X		X		CD20+7.5X370R	20+7.5	X			X		X	CR20X440R	20	X	X				X
CR17.5X370	17.5	X		X		X		CD25+3X370R	25+3	X			X		X	CR25X440R	25	X	X				X
CR20X370	20	X		X		X		CD25+4X370R	25+4	X			X		X	CR30X440R	30	X	X				X
CR25X370	25	X		X		X		CD25+5X370R	25+5	X			X		X	CR35X440R	35	X	X				X
CR30X370	30	X		X		X		CD30+3X370R	30+3	X			X		X	CR40X440R	40	X	X				X
CR35X370	35	X		X		X		CD30+5X370R	30+5	X			X		X	CR45X440R	45	X	X				X
CR40X370	40	X		X		X		CD35+5X370R	35+5	X			X		X	CR50X440R	50	X	X				X
CR45X370	45	X		X		X		CD40+5X370R	40+5	X			X		X	CR55X440R	55	X	X				X
CR50X370	50	X		X		X		CD45+5X370R	45+5	X			X		X	CR60X440R	60	X	X				X
CR60X370	60	X		X		X		CD80+5X370R	80+5	X			X		X	CR70X440R	70	X	X				X
CR70X370	70	X		X		X		CR2X440	2		X	X		X		CR80X440R	80	X	X				X
CD15+5X370	15+5	X			X	X		CR3X440	3		X	X		X		CD20+5X440R	20+5	X		X			X
CD15+10X370	15+10	X			X	X		CR4X440	4		X	X		X		CD25+5X440R	25+5	X		X			X
CD20+5X370	20+5	X			X	X		CR5X440	5		X	X		X		CD25+7.5X440R	25+7.5	X		X			X
CD20+15X370	20+15	X			X	X		CR6X440	6		X	X		X		CD30+5X440R	30+5	X		X			X
CD25+3X370	25+3	X			X	X		CR7.5X440	7.5		X	X		X		CD30+7.5X440R	30+7.5	X		X			X
CD25+5X370	25+5	X			X	X		CR10X440	10		X	X		X		CD35+5X440R	35+5	X		X			X
CD25+10X370	25+10	X			X	X		CR12.5X440	12.5		X	X		X		CD35+7.5X440R	35+7.5	X		X			X
CD30+3X370	30+3	X			X	X		CR15X440	15		X	X		X		CD35+10X440R	35+10	X		X			X
CD30+5X370	30+5	X			X	X		CR17.5X440	17.5		X	X		X		CD40+5X440R	40+5	X		X			X
CD30+7.5X370	30+7.5	X			X	X		CR20X440	20		X	X		X		CD40+7.5X440R	40+7.5	X		X			X
CD35+5X370	35+5	X			X	X		CR25X440	25		X	X		X		CD40+10X440R	40+10	X		X			X
CD35+7.5X370	35+7.5	X			X	X		CR30X440	30		X	X		X		CD45+5X440R	45+5	X		X			X
CD40+5X370	40+5	X			X	X		CR35X440	35		X	X		X		CD45+7.5X440R	45+7.5	X		X			X
CD45+5X370	45+5	X			X	X		CR40X440	40		X	X		X		CD50+5X440R	50+5	X		X			X
CD55+7.5X370	55+7.5	X			X	X		CR45X440	45		X	X		X		CD50+7.5X440R	50+7.5	X		X			X
CD60+10X370	60+10	X			X	X		CR50X440	50		X	X		X		CD55+5X440R	55+5	X		X			X
CR15X370R	15	X		X			X	CR55X440	55		X	X		X		CD55+7.5X440R	55+7.5	X		X			X
CR20X370R	20	X		X			X	CR60X440	60		X	X		X		CD55+10X440R	55+10	X		X			X
CR25X370R	25	X		X			X	CD25+5X440	25+5		X		X	X		CD60+5X440R	60+5	X		X			X
CR30X370R	30	X		X			X	CD30+5X440	30+5		X		X	X		CD60+7.5X440R	60+7.5	X		X			X
CR35X370R	35	X		X			X	CD35+5X440	35+5		X		X	X									

+ Indicates Dual Capacitor; R suffix indicates Round Capacitor

Capacitors

Motor Start Capacitors



UL approved Start Capacitors available in 110 VAC, 165 VAC, 220 VAC and 330 VAC.



Features

- Dry, electrolytic, non-polarized type for intermittent duty in AC motors and compressors.
- Used where starting torques must be higher in relation to running torques.
- Moisture and oil resistant molded phenolic resin or plastic material.
- Standard dual blade terminals.
- Industry standard case sizes.

110 to 130 VAC

PART NO.	VALUE (μF)	CASE SIZE
CS21-25X110	21-25	1
CS25-30X110	25-30	1
CS30-36X110	30-36	1
CS36-43X110	36-43	1
CS43-56X110	43-56	1
CS56-72X110	56-72	1
CS64-77X110	64-77	1
CS72-88X110	72-88	1
CS88-108X110	88-108	1
CS108-130X110	108-130	1
CS124-156X110	124-156	1
CS145-175X110	145-175	1
CS161-193X110	161-193	1
CS189-227X110	189-227	1
CS200-240X110	200-240	2
CS216-259X110	216-259	2
CS233-292X110	233-292	4
CS270-324X110	270-324	4
CS300-360X110	300-360	4
CS324-388X110	324-388	4
CS340-408X110	340-408	4
CS378-440X110	378-440	4
CS400-480X110	400-480	5
CS460-552X110	460-552	5
CS540-648X110	540-648	5
CS590-708X110	590-708	5
CS708-850X110	708-850	7
CS829-995X110	829-995	8
CS1000-1200X110	1000-1200	8

165 VAC

PART NO.	VALUE (μF)	CASE SIZE
CS124-156X165	124-156	4
CS145-175X165	145-175	4
CS161-193X165	161-193	4
CS233-292X165	233-292	5
CS270-324X165	270-324	5

330 VAC

PART NO.	VALUE (μF)	CASE SIZE
CS21-25X330	21-25	1
CS25-30X330	25-30	1
CS30-36X330	30-36	4
CS36-43X330	36-43	4
CS43-56X330	43-56	4
CS53-70X330	53-70	5
CS56-72X330	56-72	5
CS72-88X330	72-88	5
CS88-108X330	88-108	7
CS108-130X330	108-130	8
CS124-156X330	124-156	8
CS130-156X330	130-156	8
CS145-175X330	145-175	8
CS161-193X330	161-193	8
CS189-227X330	189-227	8
CS216-259X330	216-259	8
CS270-324X330	270-324	8
CS324-388X330	324-388	8

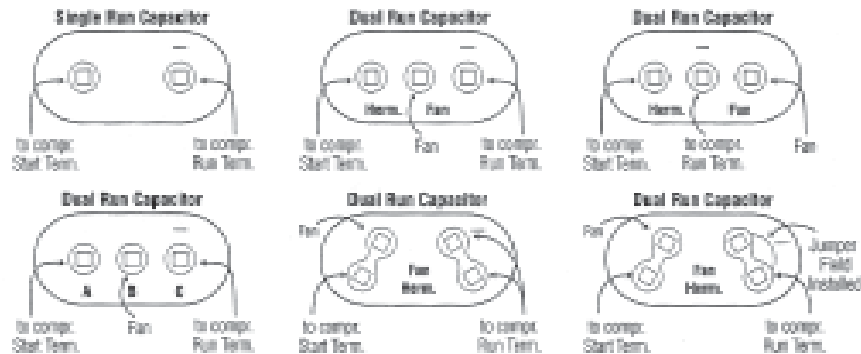
208 to 250 VAC

PART NO.	VALUE (μF)	CASE SIZE
CS21-25X220	21-25	1
CS25-30X220	25-30	1
CS30-36X220	30-36	1
CS36-43X220	36-43	1
CS43-56X220	43-56	2
CS56-72X220	56-72	2
CS64-77X220	64-77	4
CS72-88X220	72-88	4
CS88-108X220	88-108	4
CS108-130X220	108-130	4
CS124-156X220	124-156	5
CS145-175X220	145-175	7
CS161-193X220	161-193	7
CS189-227X220	189-227	7
CS216-259X220	216-259	8
CS233-292X220	233-292	8
CS270-324X220	270-324	8

Case Dimensions

CASE SIZE	DIAMETER	HEIGHT
1	1-7/16"	2-3/4"
2	1-7/16"	3-3/8"
4	1-13/16"	3-3/8"
5	1-13/16"	4-3/8"
6	2-1/16"	3-3/8"
7	2-1/16"	4-3/8"
8	2-9/16"	4-3/8"

Wiring Diagrams for Run Capacitors



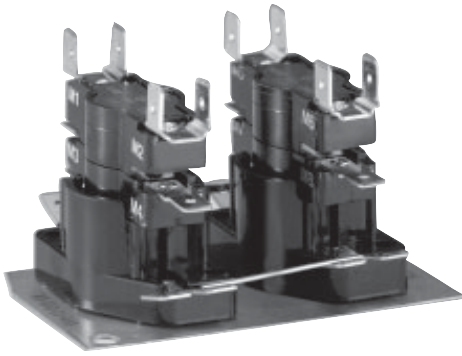
- A. Highest MFD
- B. Next highest MFD
- C. Always is common
- D. Lowest MFD if there are three capacitors

Line or Common terminal will always be installed in some way, either with a Red Mark by the terminal or sometimes a small dot or dash indented in the metal by the terminal.

When changing from any Dual Run Capacitor with three(3) terminals, to a Dual Run Capacitor with four(4) terminals, the two Line or Common terminals should be jumpered.

Sequencers

THERMODISC®



Features

- Direct replacement for most fan & heat sequencing functions.
- 24 volt input control
- Contacts designated M1 – M2 of a multi timing sequencer will turn on first and turn off last, as required by UL and CSA for electric heating applications.
- Five second on delay between all subsequent stages, unless they function together.

Applications

The SUPCO Q Series and Sequencers are field proven for controlling the operation of heating elements and or blower motors in electric, gas or oil heat systems.

- Electric furnaces
- Gas furnaces
- Heat Pumps
- Oil furnaces

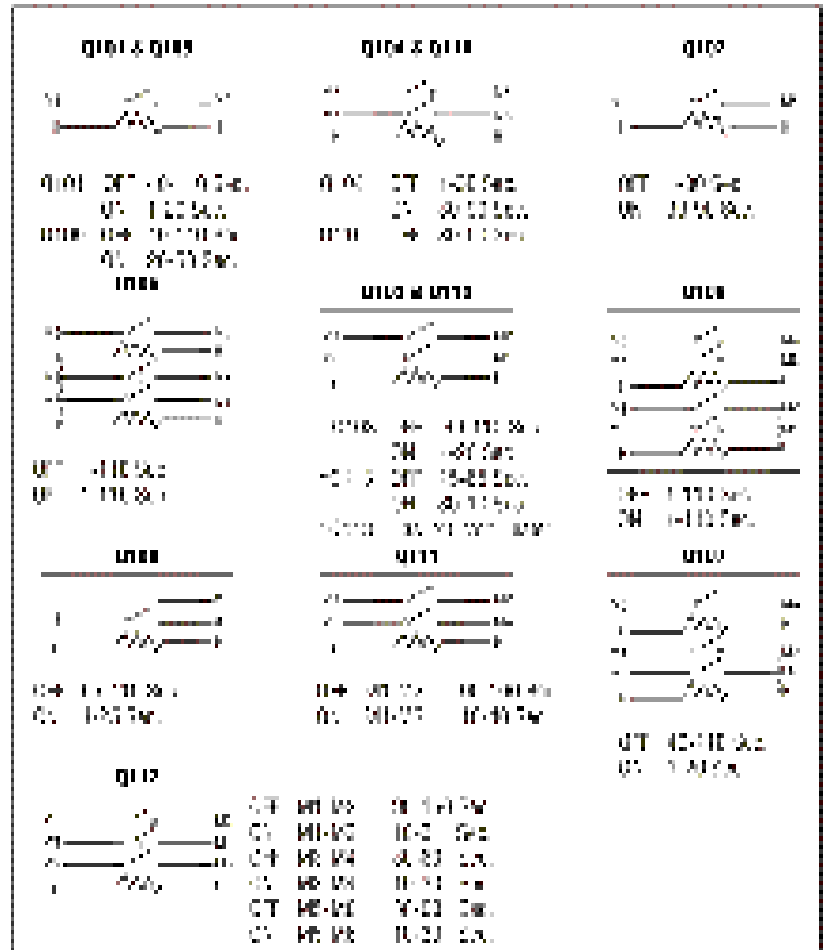
Recommended Sequencer Packages for Electric Heating

Note 1: Auxiliary Contacts: In the above recommended packages, during the ON cycle, the auxiliary contacts complete the control circuit to subsequent 15S sequencers when more than one 15S sequencer is required. The auxiliary contacts may be any contacts in the first 15S sequencer except those marked M1-M2.

Note 2: Fan Interlock: The recommended combinations which contain more than one 15S sequencer include an extra set of contacts for fan interlock. (These are the first contacts of the second and third 15S sequencers.) A fan interlock is required by Underwriters Laboratories in order to guarantee that the fan will stay on until all elements are de-energized. All of the M1-M2 contacts of each 15S unit would be wired to the fan so that during the OFF cycle, the fan would stay energized regardless of the timing sequence of each package.

Note 3: Main Contacts, Electrical Ratings: 7FLA, 4LRA, 240 VAC inductive or 30A, 240 VAC resistive or 30A, 240 VAC total of inductive or resistive, with 7FLA, 240 VAC maximum inductive.

Note 4: Control Voltage on Heater Terminals (H): 24 VAC nominal (heater rated for 30 VAC/NEMA Class II circuit).



Cross Reference

SUPCO	MARS	WATSCO	KLIXON	TOD	W/R	JEPCO	OEM
Q101	33241	TDR10	6000AONI-98	15SH1309571	24A34-1	*	*
Q102	33342	TDR15	6000AONI-97	15SH1309572	24A34-2	*	*
Q103	33244	TDR20	6000AONI-87	15SH1309573	24A34-3	TD12	Janitrol BT 1256504
Q104	33245	TDR25	6000AONI-86	15SH1309574	24A34-4	TD34	*
Q105	33232	TDR30	51172-32	15SH1309575	24A34-5	51172-32-2	*
Q106	33233	*	51172-22	15SH1309576	24A34-6	*	*
Q107	*	*	*	15SH41	*	*	*
Q108	*	*	*	12S50M	*	*	Goodman B13707-38
Q109	*	*	*	15SH1	*	*	Janitrol BT 1256500
Q110	*	*	*	12S22	*	*	Weatherking 422311608
Q111	*	*	*	14S22	*	*	Weatherking 422311606
Q112	*	*	*	14SX22	*	*	Weatherking 422311607
Q113	33265	*	*	12S22	*	*	

*Note all sequencers include a 240 volt heater, except the Q113 which has a 240 volt heater.

Wall Thermostats



*“Climate Technology Corporation”
A Hunter Fan Company*

Thermostats...loaded with features, designed for value!

All CTC Thermostats Feature

User Friendly Programs and Features

- **Attractive Styling**
Blends well in any residential application.
- **Overheat Protection**
Prevents lock-up in the heat mode by not allowing heat to come on if temperature is over 95 degrees.
- **Static Protection**
Handles electrical spikes of up to 20,000 volts that could otherwise damage the system.

Mechanical

All models offer our “quiet switching” mercury bulb design and require no additional sub-base for heating, cooling or heating/cooling installation. All deliver maximum performance at a value price! All Mechanical Thermostats have a one year warranty.



43004 – Horizontal



43005 – Vertical

Heating/Cooling Thermostats

43004 – Horizontal 43005 – Vertical

- For use with most 4 or 5 wire 24 VAC systems and single-stage heat pumps
- Adjustable heat anticipator
- Terminations: RC, RH, W, Y, G, O, B

Cooling Only Thermostat

43320 – Vertical

- For use with most 2 wire 24 VAC systems
- Fixed cooling anticipator
- Terminations: RC, Y



43320 – Vertical

Heating Only Thermostats

43309 – Horizontal

- For use with most 2 wire 24 VAC and millivolt systems
- Adjustable heat anticipator
- Terminations: RH, W



43309 – Horizontal



43359 – Horizontal

Heating Only Thermostats

43359 – Horizontal

- 3-wire zone control
- Fixed heat anticipator
- Terminations: R, Y, W

Wall Thermostats

Digital

All CTC Digital and Programmable Thermostats

Feature:

- Latching relays for system compatibility
- Soft touch keypad
- Low battery indicator
- INDIGLO® Backlight
- Easy, front load battery access
- 2 AA batteries included
- F°/C° selector
- 3 year warranty

Are Compatible With:

- 24 VAC heat/cool, heat only or cool only systems
- Gas, electric or oil systems
- Millivolt systems
- 2 wire hydronic systems

(Not for use with 110/220V systems)

Have These Specifications:

- 20-30 VAC, 50/60 Hz
- Current draws 0.1 to 1.5 amps
- Temperature set range: 45° to 95°F (7° to 35°C)
- Operating differential +/- 1° F
- Compressor protection: 4 min. delay on break



43054
For Single-Stage Heat Pumps with INDIGLO® night-light

Additional Features:

- Electronic digital accuracy
- Large, easy-to-read LCD
- Filter change indicator
- No programming required
- No leveling required

Additional Specifications:

- 43054 Terminations: RC/O, RH/B, Y, W, G, R
- Bimetal freeze protection



43057
Heat Pump Thermostat Two-Stage Heat/Cool with INDIGLO® night-light

Additional Features:

- Refresh Programmable Fan
- AC Powered
- Filter change indicator
- No programming required
- 1st and 2nd Stage Span Adjustment

Additional Specifications:

- Display Temperature Limits 40° to 95° F
- Terminations: R.G. Y1, Y2, O, B, W2, L, E, C
- Compressor protection: 3.5 min. delay on break
- Bimetal freeze protection



43058

43058
For Multi-Stage Heat Pump/Conventional Two-Stage Heat/Cool Thermostat With Auto Season Changeover

Additional Features:

- Energy Monitor
- Filter Monitor
- No programming required
- "System On" indicators
- Keyboard lock
- Auto heat recovery
- AC powered with 2 AAA battery backup
- Optional hardwire remote sensors (43658)

Additional Specifications:

- Display temperature limits: 40° to 95°F
- Terminations: R, Y1, Y2, W1, W2, E, O, B, G, L, C
- Remote Sensor Terminations: RS1+, RS1-, RS2+, RS2-



43658

43658
Remote Sensor (Sold Separately)

Also Compatible With Most:

- Two-stage heat pumps with 2 heat/2 cool
- Two-stage heat pumps with 2 heat/1 cool
- Single-stage heat pumps
- Conventional two-stage heat/cool systems (Not for use with 110V/220V systems)
- Multi-stage heat/cool

Wall Thermostats

Programmable



43154
**5 Day/2 Day Programming,
 4 Periods Per Day
 For Conventional Heat/Cool or
 Single-Stage Heat Pump Systems**

Also Compatible With Most:

- Single-stage heat pumps

Additional Features:

- Adjustable cycle rate
- Pre-programmed
- Easy "Front Load" battery access
- Mechanical low temperature protection
- Filter Monitor
- Up-opening door
- Two-stage low battery with fail safe protection

Additional Specifications:

- Terminations: G, RC, RH, Y/O, WB, Y1



43255
**5 Day/1 Day/1 Day Programming, 4
 Periods Per Day For Conventional Heat/
 Cool or Single Stage Heat Pump Systems**

Also Compatible With Most:

- Single-stage heat pumps

Additional Features:

- Adjustable cycle rate
- Pre-programmed
- Easy "Front Load" battery access
- Mechanical low temperature protection
- Filter monitor
- Up-opening door
- Two-stage low battery warning with fail safe protection

Additional Specifications:

- Terminations: G, RC, RH, Y/O, W/B, Y1



43355
**7 Day Programming, 4 Programs
 Per Day**

Also Compatible With Most:

- Single-stage heat pumps

Additional Features:

- Adjustable cycle rate
- Pre-programmed
- Easy "Front Load" battery access
- Energy and filter use monitors
- Up-opening door
- Daylight Savings key
- Temporary and vacation overrides
- Programmable Hold
- Home Today Override
- Two-stage low battery warning with fail safe protection

Additional Specifications:

- Terminations: G, RC, RH, Y/O, W/B, Y1



43503
**7 Day Programming, 4 Programs
 Per Day With Auto Season Changeover**

Additional Features:

- Auto Programming
- Keyboard lock
- Easy Front Load battery access
- Energy and filter use monitors
- Patented Home Today temporary override
- Vacation Hold override

Additional Specifications:

- Terminations: RC, RH, W, Y/Y1, G, O/B



43558
**7 Day Programming, 4 Programs Per Day
 For Multi-Stage Heat Pump/Conventional
 Two-Stage Heat/Cool With Auto-Season
 Changeover Thermostat**

Also Compatible With Most:

- Two-stage heat pumps with 2 heat/2 cool
- Two-stage heat pumps with 2 heat/1 cool
- Single-stage heat pumps
- Conventional two-stage heat/cool systems (Not for use with 110V/220V systems)
- Multi-stage heat/cool

Additional Features:

- Energy Monitor
- "System On" indicators
- Keyboard lock
- Auto heat recovery
- Preprogrammed
- Filter Monitor
- Temporary/Vacation overrides
- Programmable Hold
- Home Today override
- Auto season changeover
- Optional hardwire remote sensors (43658)
- AC powered with 2 AAA battery backup

Additional Specifications:

- Terminations: R, Y1, Y2, W1, W2, E, O, B, G, L, C
- Remote Sensor Terminations: RS1+, RS1-, RS2+, RS2-



43658 Remote Sensor (Sold Separately)

Wall Thermostats

Mechanical

		Adjustable Heat Anticipator	Quiet Switching	Most Gas, Oil or Electric	24 VAC Nominal	Millivolt	Terminals	Product Dimensions
43320	Vertical Cool Only		●		●		RC, Y	
43309	Horizontal Heat Only	●	●	●	●	●	RH, W	
43359	Horizontal Heat Zone Control		●	●	●	●	R, Y, W	
43004	Horizontal Heat/Cool	●	●	●	●		RH, RC, G, Y, W, O, B	1.57"D X 4.5"W X 3.32"H
43005	Vertical Heat/Cool	●	●	●	●		RH, RC, G, Y, W, O, B	1.57"D X 4.5"W X 3.32"H

Digital

		Large LCD Digital Accuracy	Easy to Read Display	Filter Change Indicator	F°/C° Readout	Battery Powered	Low Battery Indicator	No Leveling Required	Heat/Cool & Heat Only Systems	Terminals	Remote Sensor Terminals	Product Dimensions
43054	Electronic w/ INDIGLO® Night-Light	●	●	●	●	●	●	●	●	RC/O, RH/B, Y, W, G, R		1.125"D X 4.75"W X 4"H
43058	Digital Multi-Stage Heat Pump/Conventional	●	●	●	●	Battery Backup	●	●	●	R, Y1, Y2, W1, W2, E, O, B, RS2-	RS1+ RS1- RS2+	1.5"D X 7"W X 4.75"H
43057	Heat Pump Thermostat 2-Stage Heat/2-Stage Cool. Single & Multi-Stage	●	●	●	●		●	●	●	R, G, Y1, Y2, O, B, W2, L, F, C		1.25"D X 5"W X 4.75"H

Programmable

		Program Flexibility	Programs Per Day	Preprogrammed	Auto Recovery	Filter Change Indicator	F°/C° Readout	Temporary & Vacation Overrides	Home Today Override	Energy Monitor	Battery Powered	Heat/Cool or Heat Only	Keyboard Lock	Single-Stage Heat Heat Pump	Terminals	Remote Sensor Terminals
43154	Programmable w/INDIGLO® Night-Light	5+2	4	●	●	●	●	●			●	●		●	RC, RH, Y/O, W/B, Y1, G	
43255	Programmable w/INDIGLO® Night-Light	5+1+1	4	●	●	●	●	●			●	●		●	RC, RH, Y/O, W/B, Y1, G	
43355	Programmable w/INDIGLO® Night-Light	7	4	●	●	●	●	●	●	●	●	●		●	RC, RH, Y/O, W/B, Y1, G	
43503	Programmable w/AutoSeason Changeover	7	4	●	●	●	●	●	●	●	●	●	●	●	W, RH, RC, G, Y/Y1, O/B	
43558	Programmable Multi-Stage Heat Pump/Conventional	7	4	●	●	●	●	●	●	●	Battery Backup	●	●	●	R, Y1, Y2, W1, W2, E, O, B, G, L, C	RS1+ RS1- RS2+ RS2-

Thermostat Guards

SUPCO offers a complete line of metal and plastic thermostat guards for the HVAC industry. Manufactured with the highest quality materials and production standards to ensure rugged dependability and attractive appearance.

Metal Thermostat Guards

- 18-22 Gauge Steel
- Baked Enamel Finish
- Louvered Cover
- Maximum Protection

Plastic Thermostat Guards

- Hi-Impact Plastic
- Clear
- Opaque
- Bronze

All Models

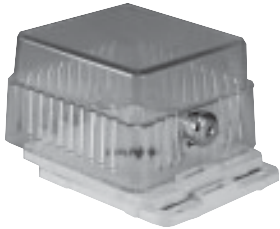
- Locking Key
- Mounting hardware
- Vertical or Horizontal Mounting



Designer Series
BTG-DK



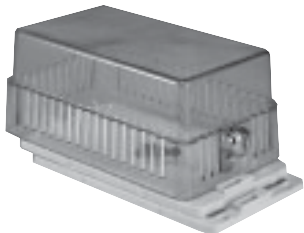
Universal Series
BTG-U02



Elite Series
BTG-EK



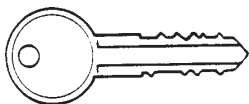
Classic Series
BTG-O



Regal Series
BTG-RK



Sentinal Series
BTG-54VL



F336

SERIES	DESCRIPTION	INSIDE DIMENSIONS	INSIDE DIMENSIONS
		SOLID BASE (H x W x D)	RING BASE (H x W x D)
Designer			
BTG-DK	Clear Plastic	4 1/4" x 7 5/8" x 2 1/8"	4 1/8" x 7-1/16" x 2-1/4"
BTG-DB2	Bronze Plastic	4 1/4" x 7 5/8" x 2 1/8"	4 1/8" x 7-1/16" x 2-1/4"
BTG-DO	Opaque Plastic	4 1/4" x 7 5/8" x 2 1/8"	4 1/8" x 7-1/16" x 2-1/4"

Universal

BTG-UK2	Clear Plastic	8 1/4" x 5 3/8" x 3 1/2"	8 1/8" x 4 5/8" x 3-5/8"
BTG-UB2	Bronze Plastic	8 1/4" x 5 3/8" x 3 1/2"	8 1/8" x 4 5/8" x 3-5/8"
BTG-UO2	Opaque Plastic	8 1/4" x 5 3/8" x 3 1/2"	8 1/8" x 4 5/8" x 3-5/8"
BTG-UM	Metal	8 1/4" x 5 3/8" x 3 1/2"	*
BTG-UWM	Metal	*	6 3/4" x 4 1/4" x 3 9/16"

Elite

BTG-EK	Clear Plastic	3 7/8" x 3 1/2" x 2 1/2"	*
BTG-EO	Opaque Plastic	3 7/8" x 3 1/2" x 2 1/2"	*
BTG-EM	Metal	3 7/8" x 3 1/2" x 2 1/2"	*

Classic

BTG-K	Clear Plastic	5 1/4" x 4 3/8" x 3"	5 1/4" x 4 5/8" x 3 1/4"
BTG-O	Opaque Plastic	5 1/4" x 4 3/8" x 3"	5 1/4" x 4 5/8" x 3 1/4"
BTG-KM	Metal	5 1/4" x 4 3/8" x 3"	*
BTG-KWM	Metal	*	5 1/4" x 4 5/8" x 3 1/4"

Regal

BTG-RK	Clear Plastic	6 3/8" x 3 1/2" x 3"	6 3/8" x 3 1/2" x 3 1/4"
BTG-RB2	Bronze Plastic	6 3/8" x 3 1/2" x 3"	6 3/8" x 3 1/2" x 3 1/4"
BTG-RO	Opaque Plastic	6 3/8" x 3 1/2" x 3"	6 3/8" x 3 1/2" x 3 1/4"
BTG-RM	Metal	6 3/8" x 3 1/2" x 3"	*
BTG-RWM	Metal	*	6 3/8" x 3 1/2" x 3 1/4"

Sentinal

BTG-54VL	Metal Hinged	6 1/4" x 4 1/4" x 3 1/8"	*
BTG-54VLW	Metal Hinged	*	6" x 3 3/4" x 3 1/8"

F336	Replacement Key	Fits All Models
------	-----------------	-----------------

Dishwasher Parts

Exact Replacement Dishwasher Parts

Electrolux

807007
DW602



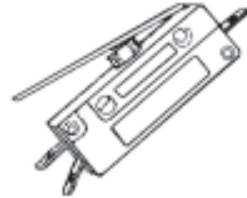
Roller Rack & Cap Kit
Also: D&M 807007

807008
DW601



Roller Rack Kit
Also: D&M 807008

807043
ES16300



Door Switch
Also D&M and Maytag

807680
ES16802



Float Switch
Reference: 530807680

Electrolux

808180K
DW114



Pop-Up Tower Kit
Reference: 5303943007

809018
DW117



Spray Arm Bolt
Also D&M and Maytag

809703
DW118



Door Spring
Reference: 530809703

3205549
DW116



Tower Gasket
Reference: 5303351197

General Electric

WD1X1147
DW145



Door Spring

WD1X1154
DW146



Door Spring

WD1X1308
DW150



Door Spring

WD1X5488
DW148



Check Valve

Part numbers and illustrations are intended solely for identification. Items offered for sale are not represented to be manufactured by the company that built the original model.