

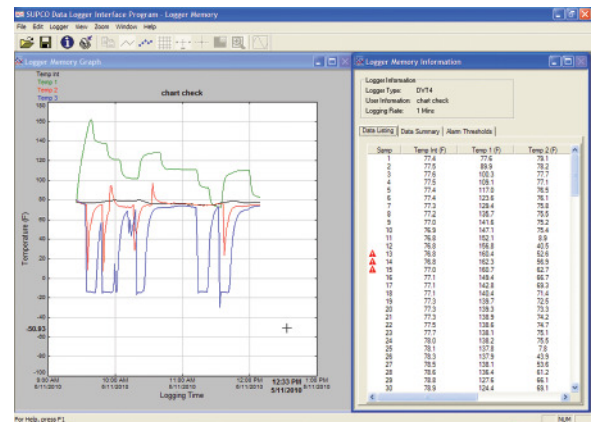
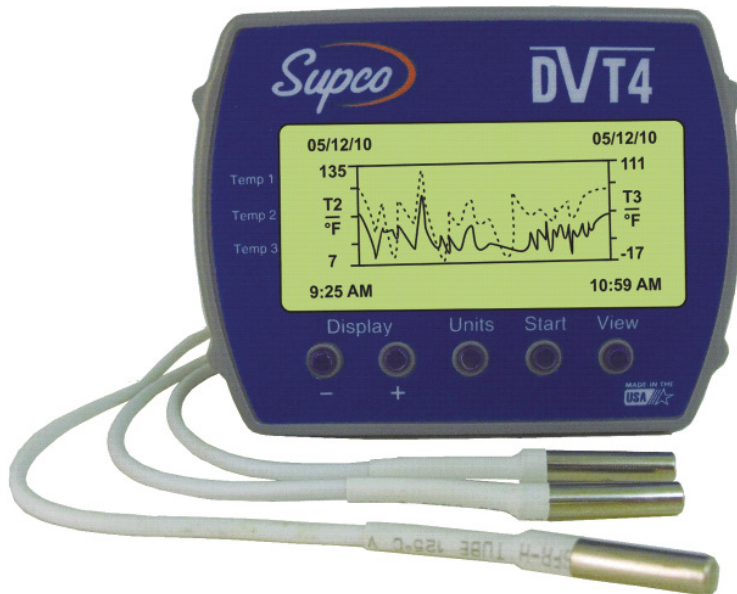


DVT4

Data View Data Logger

Four (4) Channel Temperature Data Logger with Display

INSTANTLY record and view up to 4 temperatures using 1 internal and 3 external sensors. The large, clear display shows all channels simultaneously, as well as the temperature difference between channels. Up to 87,000 data points are available for download to your PC for further analysis.



Features/ Benefits

- Text Display: Real time temperature, logging summary, sample rate, memory used and memory left.
- Graph Display: Shows measurement trends with scrolling feature.
- Visual over and under alarm indicators.
- Internal probe temperature range 15°F to 150°F (-10°C to 65°C).
- External probe temperature range -40°F to 160°F (-40 to 70°C)
- USB connection (cable included).
- Compatible with Windows™ 98SE/ME, 2000, XP, Vista and Windows™ 7.
Compatible with 32 and 64 bit systems.



SEALED UNIT PARTS CO., INC
PO Box 21, 2230 Landmark Place, Allenwood, NJ 08720 USA
Phone: 732-223-6644 Fax: 732-223-1617
www.supco.com • info@supco.com



Applications:

- Refrigerators/Freezers
- Commercial Refrigeration Systems
- Wine Storage
- Medical Storage Facilities
- Greenhouses
- Florists
- Museums
- Laboratories

Software Specifications

| | |
|---------------------------------------|--|
| PC Interface | USB port. USB cable is included |
| Sampling Interval | User selectable from 1 second to 18 hours, in 1 second increments. |
| Data Security | Unique factory set logger ID. Recording session counter. Password protected calibration. |
| Operating System Compatibility | Windows® 98SE, ME, 2000, XP, Vista and 7. Compatible with 32 and 64 bit systems. Not compatible with Windows NT or Windows 95. |
| Minimum System Requirements | 5MB of free disk space, 800 x 600 screen resolution, 1 free USB port. |
| Recording Start | On button press, immediate after setup, or at a user specified date and time. |
| Recording Mode | Stop on memory full, or continuous recording with memory rollover |
| Real Time Status | Visual indication through the status LED. Software real time status. |
| User Calibration | Password protected calibration for each channel. |
| User Information | Up to 30 characters |
| Logger Channels | User selectable. Disabling channels increases the storage capacity of the other channels. |
| Units | US and Metric |
| Data Format | Exportable to text or Excel files. |

Logger Specifications

| | |
|---|--|
| Sample Storage Capacity | 21,760 points for 4 temperatures, 29,013 points for 3 temperatures, 43,520 points for 2 temperatures, 87,040 points for single temperature. |
| Sample Rate | User selectable 1 second to 18 hour |
| Alarms | Visual over and under alarm indicator for all 4 channels |
| Calibration | User single point offset calibration is available through software for all temperature channels. Calibration can be password protected |
| Operating Temperature | 15°F to 150°F (-10°C to 65°C) |
| Storage Temperature | -5°F to 160°F (-20°C to 70°C) |
| Time Accuracy | +/-100ppm@75°F |
| Internal Probe Temperature Range | 15°F to 150°F (-10°C to 65°C) |
| External Probe Temperature Range | -40°F to 160°F (-40°C to 70°C) |
| Temperature Accuracy | +/-1°F (0.5°C) |
| Temperature Resolution | 0.1°F or 0.1°C |
| Dimensions | 4" x 3.05" x 1.5" (10.2cm x 7.7cm x 3.8cm) |
| Weight | 7.0 oz (200g) |
| Power Source | Three AA batteries (included) |
| Battery Life | 1 year continuous use, 2 years average use. The logger automatically turns itself OFF after 1 hour, when not logging. Turn ON by pressing any button |

F434-05052010

SEALED UNIT PARTS CO., INC

PO Box 21, 2230 Landmark Place, Allenwood, NJ 08720 USA

Phone: 732-223-6644 Fax: 732-223-1617

www.supco.com • info@supco.com