



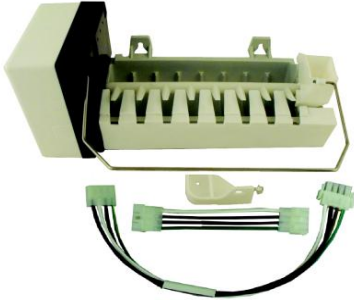
Sealed Unit Parts Co. Inc.

[www.supco.com](http://www.supco.com)  
[info@supco.com](mailto:info@supco.com)



## Replacement Icemakers

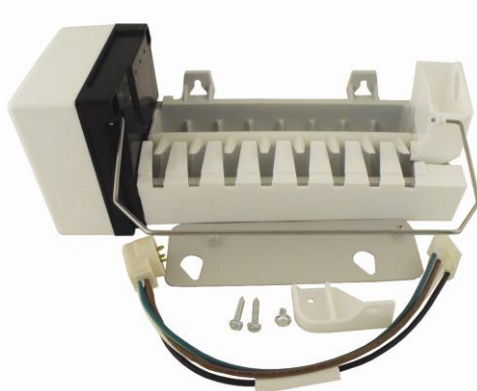
### RIM277 Replacement for Electrolux® 5303918277



Designed to replace Kenmore®, Electrolux®, Frigidaire®, Gibson®, Kelvinator®, White-Westinghouse® brands in 1400 different models. Replaces part numbers: 5303918277, 5303291912, 218226700, 218699501, 218713500, 240352401, & 240352403

Icemaker includes 2 harnesses. Using these harnesses, this icemaker will also replace RIM115, RIM116, RIM117, Gemline®, Mid-South® mechanical style icemakers. Using a combination of supplied wiring harnesses or your old wiring harness this unit will replace SubZero® part numbers: 4200520, 4200521, 4200522, 4201760 Using your old wiring harness, this unit will replace: Amana® / Maytag® D7824706Q.

### RIM300 Replacement for GE® IM3, IM1, UKKIT



Designed to replace GE® and Hotpoint®, IM1 through IM3 series icemakers used in thousands of models. Replaces part numbers: IM1, IM2, IM3, UKKIT1 through UKKIT5, WR30X320, WR30X327, WR30X328, and over 100 other part numbers. Also used on Sears® / Kenmore® with a model prefix of 363 [indicates GE® manufacture].

Offering the dependability of the modular design, this Icemaker includes mounting plate to match the GE® style mount. Included is the standard GE® style round plug with four pin connection.



Sealed Unit Parts Co. Inc.

[www.supco.com](http://www.supco.com)  
[info@supco.com](mailto:info@supco.com)



## Replacement Icemakers

### RIM301 Replacement for GE® WR30X10001



Designed to replace GE® WR30X10001 icemaker. Replaces part numbers: WR30X10001, JS3, WR30X280, WR30X284, WR30X305, WR30X316, & WR30X326 Also used on Sears® / Kenmore® with a model prefix of 363 [indicates GE® manufacture].

This late model icemaker is pre-mounted on the bracket. Wide ice deflector and proven modular technology make this icemaker an excellent choice.

### RIM313 Complete Add-on kit to replace Whirlpool® 1129313 and ECKMF-64



Designed to replace the Whirlpool® 1129313 and ECKMF-64 add-on an icemaker kit. This kit also replaces: 1105298, 1114185, 1118554, 1118555, 1118746, 1129312, 1129314, 468150, 8050, 8050-1, 8050-2, 8150, 940556, 941555, 984827, 987613, ECKMF2, ECKMF3, ECKMF4, ECKMF5, ECKMF11, ECKMF51, ECKMF6, ECKMF61, ECKMF63, ECKMF64, KIMF8.

Offering the modular icemaker, ice bin, water valve, fill line, tubes and harness; this add on kit was designed to add an icemaker to certain pre-wired models. Used on the many Whirlpool® brands. Check model number to get the correct installation kit.



Sealed Unit Parts Co. Inc.

[www.supco.com](http://www.supco.com)  
[info@supco.com](mailto:info@supco.com)



## Replacement Icemakers

### RIM316 Complete Add-on kit to replace Whirlpool® 1129316 and ECKMF-90



Designed to replace the Whirlpool® 1129316 and ECKMF-90 add an icemaker kit. This kit also replaces: 1108106, 1108154, 1114209, 1118766, 1127599, 1129303, 1129306, 1129318, 2155184, 2155185, 2155186, 2155187, 2155188, 8090, 8239, 8440, 8550, 944804, ECKMF83, ECKMF831, ECKMF86, ECKMF87, ECKMF90, IMKIT, KIMS8.

Offering the modular icemaker, ice bin, water valve, fill line, tubes and harness; this add on kit was designed to add an icemaker to certain pre-wired models. Used on the many Whirlpool® brands. Check model number to get the correct installation kit.

### RIM469 Complete replacement kit to replace Whirlpool® 2155469A and ECKMF-94



Designed to replace the Whirlpool® 2155469A and ECKMF-94 add an icemaker kit. This kit also replaces: 2155468, 2155469, 2171811, ECKMF94, IMKIT94, KIMS9.

While designed to replace the Whirlpool® 2155469A, this is an excellent choice to replace standard modular icemakers using your existing harness. This kit includes a new ice bin, a single coil icemaker valve and the fill tubes. If using the old wiring harness this unit can also be used on Amana®, Estate®, Maytag®, and SubZero®

Single coil water valve included





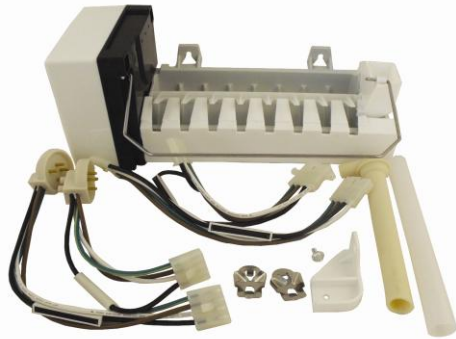
Sealed Unit Parts Co. Inc.

[www.supco.com](http://www.supco.com)  
[info@supco.com](mailto:info@supco.com)



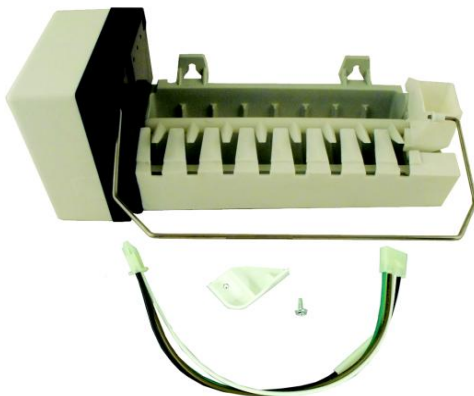
## Replacement Icemakers

**RIM500 Replacement for Whirlpool® 4211173, 4317943,  
Also replaces icemaker only on older Admiral® models.**



Designed to replace Kenmore® [made by Whirlpool® prefix 106], Whirlpool® universal modular replacement includes wiring harness for old Admiral® models as well. Replaces: 4317943, 4210317, 4211173, 480616, 480617, 482014, 482015, 482016, 482017, 482018, 482019, 482020, 482394, 482433, 482990, 625601, 625603, 625610, 625611, 625622, 625625, 625653, 625656, 625660, 626002, 626201, 626237, 626366, 626461, 626489, 626608, 626609, 626626, 626636, 626670, 627572, 68972-4, 797991, 8114, 833701, 978552, 978553, 978556, W10122496, W10190952.

## RIM501 Replacement for Amana® 1110702A and D7824706Q



Designed to replace Amana® 1110702A kit and the bare icemaker D7824706. Using the harness this icemaker replaces part numbers: 1110702A, 1110701A, D7567102, D7567105, D7567105A, D7621301, D7621305, D7621307, D7621310, IC-3, IC3, IC3H, IC3K, IC3N, IC3Q, IC4N, R0175023.

The RIM501 using your existing harness replaces hundreds of modular icemakers on Kenmore®, Whirlpool®, Admiral®, Amana®, Crosley®, Magic Chef®, Maytag®, SubZero® and many others.

Replaces: D7824705Q, 0056504, 0056599, 0056605, 0056606, 0311155, 0312578, 0312738, 0312739, 0312740, 10549201, 10563707, 10563708, 61005508, 61005508A, 67001263, 68111-1, 68972-1, 68972-4, 95091-1, 95098-1, 95109-1, D7767601, D7824701, D7824702, D7824703, D7824704, D7824705, D7824706, D7824706Q, R0154025, R0156628, R0156629, R0156669, R0161059, R0161061, R0167201, R0183135, R0194462, R0194666, R0950064, Y689724, W10122519, W10190978.



Sealed Unit Parts Co. Inc.

[www.supco.com](http://www.supco.com)

[info@supco.com](mailto:info@supco.com)



## Replacement Icemakers

### RIM597 Replacement for Whirlpool® 2198597

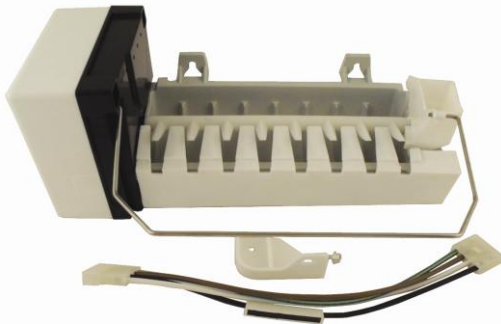


Designed to replace Whirlpool®, Kenmore®, Kitchenaid®, in 2000 different models. The RIM597 replaces part numbers: 2198597, 2198678, 626663, W10122502, W10190960

Offering the modular icemaker with heavy duty rake and extra wide stripper board. Excellent choice to replace the Whirlpool® 2198597 in the door icemaker as well as Kenmore® / Coldspot® [models with starting prefix 106 or 198]. Check model number verify application.

### RIM900 Bare Icemaker

#### Universal replacement for all modular style icemakers.



This is the bare icemaker itself, complete with cover. Designed to use the existing modular icemaker wiring harness, this icemaker will replace most of the 120 VAC modular icemakers on the market today. Replaces hundreds of different modular icemakers on tens of thousands of refrigerators. Brands include: Kenmore®, Whirlpool®, Admiral®, Amana®, Crosley®, Magic Chef®, Maytag®, SubZero® and many others.

Using the existing wiring harness on the refrigerator, this icemaker will replace: 8114, 0056504, 0056599, 0056605, 0056606, 311155, 312578, 312738, 10563707, 10563708, 61005508, 67001263, 312739, 312740, 480616, 480617, 4210317, 4211173, 4317943, 10549201, 482014, 482015, 482016, 482017, 482018, 482019, 482020, 482394, 482433, 482990, 625601, 625603, 61005508A, 68111-1, 68972-1, 68972-4, 625610, 625611, 625622, 625625, 625653, 625656, 625660, 626002, 626201, 626237, 626366, 626461, 626489, 626608, 626609, 626626, 626636, 626670, 627572, 797991, 68972-4, 95091-1, 95098-1, 95109-1, 833701, 840991, 853522, 941554, 978552, 978553, 978556, 1105299, D7767601, D7824701, D7824702, D7824703, D7824704, D7824705, D7824705Q, D7824706, D7824706Q, R0154025, R0156628, R0156629, R0156629, R0156669, R0161059, R0161061, R0183135, R0194462, R0194666, R0950064, W10122496, W10122519, W10190952., W10190978., Y689724.



Sealed Unit Parts Co. Inc.

[www.supco.com](http://www.supco.com)  
[info@supco.com](mailto:info@supco.com)



## Replacement Icemakers

### RIM943 Replacement for Whirlpool® 4317943



Designed to replace Kenmore® [made by Whirlpool® prefix 106], Whirlpool® universal modular replacement Replaces: 4317943, 4210317, 4211173, 480616, 480617, 482014, 482015, 482016, 482017, 482018, 482019, 482020, 482394, 482433, 482990, 625601, 625603, 625610, 625611, 625622, 625625, 625653, 625656, 625660, 626002, 626201, 626237, 626366, 626461, 626489, 626608, 626609, 626626, 626636, 626670, 627572, 68972-4, 797991, 8114, 833701, 978552, 978553, 978556, W10122496, W10190952.

### RIM2000 Universal Add-on Kit Universal replacement for all modular style icemakers.



Offering the modular icemaker, ice bin, single coil water valve, fill tubes, fill line, adapter plate for GE®, and many harnesses. This kit covers more brands and models than any other icemaker on the market today. Designed to replace the existing modular icemaker or install as an add-on, this icemaker will replace most of the 120 VAC modular icemakers on the market today. Replaces hundreds of different modular icemakers on tens of thousands of refrigerators. Brands include: Kenmore®, Whirlpool®, Admiral®, Amana®, Crosley®, GE®, Hotpoint®, Magic Chef®, Maytag®, SubZero® and many others.



Sealed Unit Parts Co. Inc.

[www.supco.com](http://www.supco.com)  
[info@supco.com](mailto:info@supco.com)

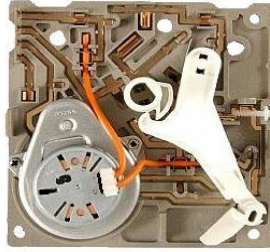


## Replacement Icemaker Parts

### IMM8366 Icemaker Control Module for 120VAC



IMM8366 Front



IMM8366 Back

The IMM8366 module is designed to replace the module on all 120VAC modular icemakers. The IMM8366 replaces: W10190935, 628366, 14210064, 483042, 483101, 483105, 626676, 626680, 626684, 627797, 627801, 627811, 627816, 628134, 628135, 628247, 628258, 628302, 628305, 628332, 628342, 628357, 628358, 628398, 628399, 8240, R0167202, R0167203, W10122536, and and others.

### IMM1515 Module with rake & stripper.



The IMM1515 contains the IMM8366 control module, a heavy duty rake and stripper. Designed to repair the 2198597 as a heavy duty kit. This unit will also replace the above IMM8366. The IMM1515 replaces Whirlpool® part numbers: 8201515, 626653, 626678, 626683, 626691, 628519, W10122535, W10190934, W10223929.

### SL7985 Harvest Thermostat



The SL7985 is easily recognized by the two pin construction. Used on Kenmore®, Admiral®, Amana®, Maytag®, SubZero®, Whirlpool® and other brands. The SL7985 replaces: W10290336, 627985, 0056603, 95092-1, 14210687, 627808, 627984, 628209, 628397, R0161060, R9800701, Y0056603. This harvest thermostat opens at 32°F, ( $\pm 3^\circ\text{F}$ ) and closes to harvest at 17°F, ( $\pm 3^\circ\text{F}$ ).