



## Moisture Test Meter

# MTM1028

Moisture is the #1 reason for mold problems. The MTM1028 provides details to moisture levels in virtually all materials. Use the piercing probes with 3 foot cable to test for moisture anywhere.

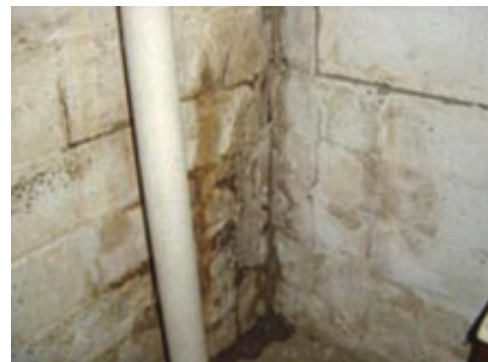


### FEATURES/BENEFITS

- Indicates 10% to 28% moisture levels
- Dual scale for maximum resolution
- Dual piercing probes
- 3 foot coiled cable

### APPLICATIONS

- Pinpoint areas ideal for mold growth
- Locate water leaks and check for wet rot
- Find out if potentially damaging excess moisture is present
- Detect moisture level in wood, concrete, plaster, carpet and more..



**SEALED UNIT PARTS CO., INC.**

PO Box 21, 2230 Landmark Place, Allenwood, NJ 08720 USA

732-223-6644 • Fax 732-223-1617

www.supco.com • info@supco.com



# Water Alarm w/ Remote Sensor

# WA100

Protect property and valuable possessions. With its 85dB alarm, the WA100 will alert you immediately upon the presence of water.

## FEATURES/BENEFITS

- 85 dB alarm sounds for up to 3 days.
- Remote sensor has 6 foot wire
- Dual position sensor
- Test button
- Wall mountable alarm

## APPLICATIONS

- Warns of leaks and overflows
- Alerts user when desired water level is reached (i.e. pools)
- Kitchen, laundry, furnace, computer room, pools, aquariums, more...



**SEALED UNIT PARTS CO., INC.**

PO Box 21, 2230 Landmark Place, Allenwood, NJ 08720 USA

732-223-6644 • Fax 732-223-1617

www.supco.com • info@supco.com

F139-0805