

PRODUCT SPECIFICATIONS

DL SERIES DATA LOGGERS



Temp., Humidity & Dew Point
Single Temperature
Dual Temperature
AC Voltage
AC Current
4-20 ma
Pressure
Event Contact
Event Voltage
Event Sound
Event Light

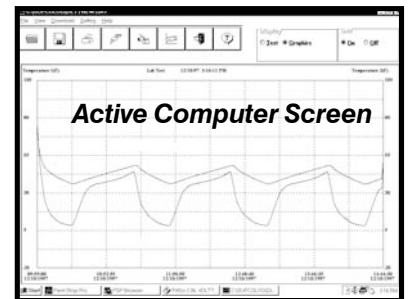


FEATURES

- All loggers can be individually calibrated in the field
- NIST certification available
- PC software compatible with Windows 95, 98, 2000 & NT
- Use the same PC software for all data loggers
- Selectable recording intervals
- Start and stop recordings in the field
- Unique locking feature prevents tampering
- LED indicator shows operation
- Retrieve data with PC or Supco's exclusive DataStor (DST)
- External probes supplied with certain loggers

Part No.	Description
DLT	Temperature Data Logger
DLTH	Temp. / Humidity Data Logger
DLTT	Dual Temp. Data Logger
DL420	4-20 ma Data Logger
DLAV	AC Voltage Data Logger
DLAC	AC Current Data Logger
DLP	Pressure Data Logger
DLEC	Event Contact Data Logger
DLEV	Event Voltage Data Logger
DLES	Event Sound Data Logger
DLEL	Event Light Data Logger
DLS	Windows 95, 98, 2000 and NT Compatible

Analyze data using supplied Windows compatible software.



PRODUCT SPECIFICATIONS

Use with Supco Data Logger Software

- DLS - Windows 98, 95, 2000 and NT Compatible

DLT - TEMPERATURE DATA LOGGER

Ambient Operating Temperature	-40°F to +150°F (-40°C to +65°C)
Storage Temperature	-40°F to +170°F (-40°C to +76°C)
Ambient Operating Relative Humidity	0 to 95% non-condensing
Time Accuracy	+/- 100ppm @ 75°F
Resolution	0.1°F (0.2°C)
Accuracy	+/- 2°F (1°C)
Capacity	10,000 Data Samples
Dimensions	2.5" x 3.6" x 1.1"
Weight	3 Oz.
Power Source (DLBAT)	3.6 Volt Lithium Battery (Supplied)
Battery Life	3 year (Average Use)

DLTT - DUAL TEMPERATURE DATA LOGGER

Ambient Operating Temperature (Logger)	+10°F to +140°F (-12°C to +60°C)
Ambient Operating Temperature (Sensors)	-40°F to +170°F (-40°C to +76°C)
Storage Temperature	-40°F to +170°F (-40°C to +76°C)
Time Accuracy	+/- 100ppm @ 75°F
Ambient Operating Relative Humidity	0 to 95% non-condensing
Remote Temperature	Precision sensor with 6' long Probe (DLTP6) cable and 4" stainless steel submersible tip, interchangeable
Accuracy	+/- 2°F (1°C)
Resolution	0.1°F (0.2°C)
Capacity	8,000 Data Samples per Channel
Dimensions	2.5" x 3.6" x 1.1"
Weight	3 Oz.
Power Source	9 Volt Alkaline Battery (Not Included)
Battery Life	1 year (Average Use)

DLTH - TEMPERATURE HUMIDITY DATA LOGGER

Ambient Operating Temperature	+32°F to +140°F (0°C to +60°C)
Storage Temperature	-40°F to +170°F (-40°C to +76°C)
Time Accuracy	+/- 100ppm @ 75°F
Relative Humidity Range	0 to 100%
Relative Hum. Accuracy	+/- 2% from 0 - 95% RH
Relative Hum. Resolution	0.1%
Temperature Accuracy	+/- 2°F (1°C)
Temperature Resolution	0.1°F (0.2°C)
Capacity	8,000 Data samples
Dimensions	2.5" x 3.6" x 1.1"
Weight	2.7 Oz.
Power Source	9 Volt Alkaline Battery (Not Included)
Battery Life	1 year (Average Use)

DL420 - 4-20 MA DATA LOGGER

Ambient Operating Temperature Range	+10°F to +150°F (-12°C to +65°C)
Storage Temperature	-40°F to +170°F (-40°C to +76°C)
Time Accuracy	+/- 100ppm @ 75°F
Ambient Operating Relative Humidity	0 to 95% non-condensing
Current Resolution	0.01ma
Current Accuracy	0.05ma
Measurement Capacity	16,000 Data Points
Dimensions	2.5" x 3.6" x 1.1"
Weight	0.26 lbs.
Power Source	9 Volt Alkaline Battery (Not Included)
Battery Life	1 year (Average Use)

DLAC - AC CURRENT DATALOGGER

Ambient Operating Temperature Range	+10°F to +150°F (-12°C to +65°C)
Time Accuracy	+/- 100ppm @ 75°F
Current Range	0 to 300 Amps AC using supplied clamp-on probe
Current Resolution	0.1 Amp AC
Current Accuracy	+/- 5%
Memory Capacity	16,000 Data Samples
Dimensions	2.5" x 3.6" x 1.1"
Weight	1.3 lbs.
Power Source	9 Volt Alkaline Battery (Not Included)
Battery Life	1 year (Average Use)

DLAV - VOLTAGE DATA LOGGER

Ambient Operating Temperature Range	+10°F to +150°F (-12°C to +65°C)
Time Accuracy	+/- 100ppm @ 75°F
Voltage Range	0 to 500 VAC
Voltage Resolution	0.1VAC
Voltage Accuracy	+/-0.5 VAC
Memory Capacity	16,000 Data Samples
Dimensions	2.5" x 3.6" x 1.1"
Weight	4.16 oz
Power Source	9 Volt Alkaline Battery (Not Included)
Battery Life	1 year (Average Use)

DLP - PRESSURE DATA LOGGER

Ambient Operating Temperature Range	+32°F to +130°F (0°C to +35°C)
Storage Temperature	-40°F to +170°F (-40°C to +76°C)
Time Accuracy	+/- 100ppm @ 75°F
Pressure Range	0 to 500 PSI
Pressure Resolution	0.15 PSI
Pressure Accuracy	+/- 3 PSI
Memory Capacity	16,000 Data Samples
Dimensions	2.5" x 3.6" x 1.1"
Weight	0.26 lbs.
Power Source	9 Volt Alkaline Battery (Not Included)
Battery Life	1 year (Average Use)

EVENT DATA LOGGERS

DLEV Range	24VAC to 270VAC (50/60 Hz.) 24VDC to 180VDC
DLEC Range	Dry Contacts from 0 to 10 Ohms
DLEL Range	Illumination Threshold Range: 18LUX to 1900LUX +/- 20%
DLES Range	Sound Threshold Range: 40db to 114db @ 1Khz. +/-20%
Ambient Operating Temperature Range	+10°F to +140°F (-12°C to 60°C)
Storage Temperature	-40°F to +170°F (-40°C to 76°C)
Time Accuracy	+/- 100ppm @ 75°F
Measurement Capacity	8,000 Event Samples
Dimensions	2.5" x 3.6" x 1.1"
Weight	0.26 Lbs.
Power Source	9 Volt Alkaline Battery (Not Included)
Battery Life	1 year (Average Use)

SEALED UNIT PARTS CO., INC.

PO Box 21, 2230 Landmark Place, Allenwood, NJ USA
732-223-6644 Fax 732-223-1617 www.supco.com